

\$1,001,214 - 21 Essex Close, St. Albert

MLS® #E4453279

\$1,001,214

5 Bedroom, 4.50 Bathroom, 4,547 sqft
Single Family on 0.00 Acres

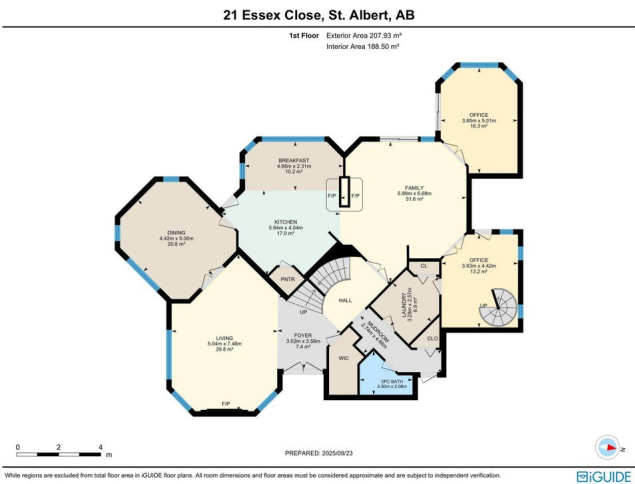
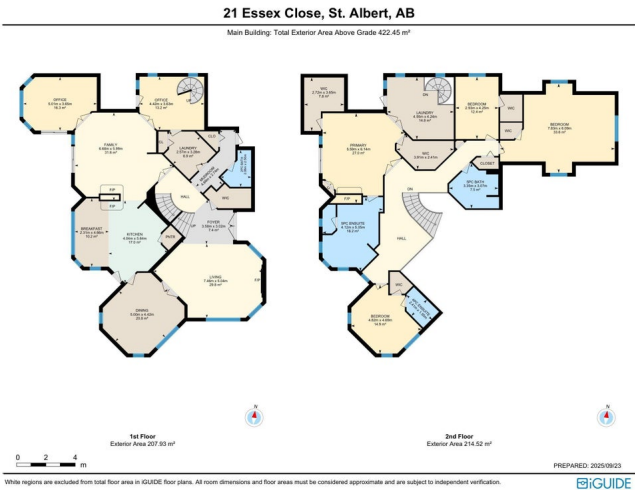
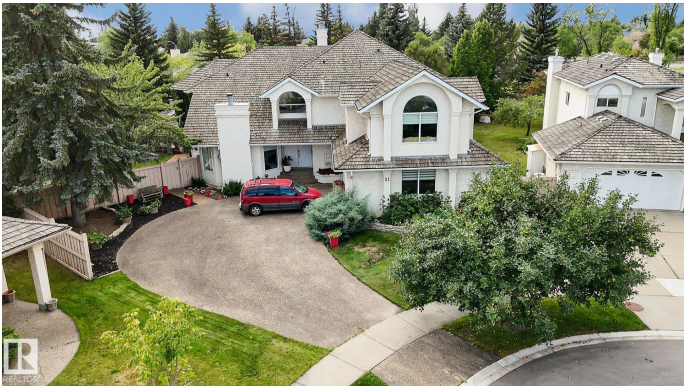
Erin Ridge, St. Albert, AB

"As Is, Where Is" Court-Ordered Judicial Sale
Experience the elegance of this spacious two-story home in St. Albert, available through a court-ordered judicial sale. The property boasts a functional floor plan that includes a family room, living room, dining room, kitchen, and two separate offices on the main floor. The second floor features a primary bedroom suite with a five-piece bath, along with three additional bedrooms and a dedicated laundry room. Adding to its significant potential, the basement is approximately 1600-1700 sqft and is well on its way to being fully finished. It includes two bedrooms, a washroom, and a huge living area with completed electrical, plumbing, and drywall work. All offers are subject to court approval, and the property is sold on an "as is, where is" basis. The listing is subject to the terms of the court order, including specific requirements for showings.

Built in 1990

Essential Information

MLS® #	E4453279
Price	\$1,001,214
Bedrooms	5
Bathrooms	4.50
Full Baths	4
Half Baths	1



Square Footage	4,547
Acres	0.00
Year Built	1990
Type	Single Family
Sub-Type	Detached Single Family
Style	2 Storey
Status	Active

Community Information

Address	21 Essex Close
Area	St. Albert
Subdivision	Erin Ridge
City	St. Albert
County	ALBERTA
Province	AB
Postal Code	T8N 5S9

Amenities

Amenities	See Remarks
Parking	Double Garage Attached

Interior

Interior Features	ensuite bathroom
Appliances	See Remarks
Heating	Forced Air-1, Natural Gas
Fireplace	Yes
Fireplaces	Glass Door
Stories	2
Has Basement	Yes
Basement	See Remarks, Partially Finished

Exterior

Exterior	Wood, Stucco
Exterior Features	Backs Onto Park/Trees, Cul-De-Sac, Fruit Trees/Shrubs, Park/Reserve, Playground Nearby, Treed Lot
Roof	Wood Shingles
Construction	Wood, Stucco
Foundation	Concrete Perimeter

Additional Information

Date Listed August 15th, 2025

Days on Market 44

Zoning Zone 24

DATA IS DEEMED RELIABLE BUT IS NOT GUARANTEED ACCURATE BY THE REALTORS® ASSOCIATION OF EDMONTON. COPYRIGHT 2025 BY THE REALTORS® ASSOCIATION OF EDMONTON. ALL RIGHTS RESERVED. Trademarks are owned or controlled by the Canadian Real Estate Association (CREA) and identify real estate professionals who are members of CREA (REALTOR®, REALTORS®) and/or the quality of services they provide (MLS®, Multiple Listing Service®)

Listing information last updated on September 27th, 2025 at 10:32pm MDT