

\$574,900 - 65 Dawson Drive, Sherwood Park

MLS® #E4448667

\$574,900

3 Bedroom, 3.00 Bathroom, 1,250 sqft

Single Family on 0.00 Acres

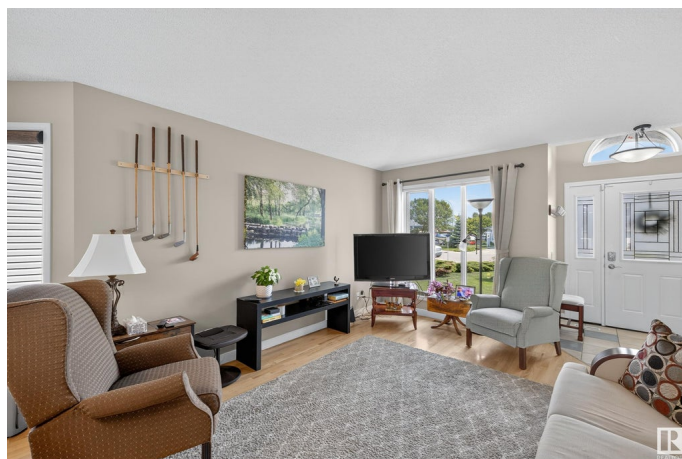
Davidson Creek, Sherwood Park, AB

Tucked away in a quiet cul-de-sac and backing onto green space with direct access to walking trails, this well cared for 3 bedroom, 3 bathroom bungalow offers a fantastic combination of privacy, comfort, and convenience. Set on a large pie shaped lot, the backyard is a relaxing retreat featuring a brand new fence, a spacious two tiered deck, and beautifully maintained landscaping. Inside you'll find granite countertops, upgraded cabinetry, air conditioning, some newer appliances, and a newer roof, all adding to the homes lasting value and appeal. Located just minutes from schools, parks, and shopping, this home is ideal for anyone looking for a move-in-ready property in a great community setting. A perfect place to call home!

Built in 1994

Essential Information

MLS® #	E4448667
Price	\$574,900
Bedrooms	3
Bathrooms	3.00
Full Baths	3
Square Footage	1,250
Acres	0.00
Year Built	1994



Type	Single Family
Sub-Type	Detached Single Family
Style	Bungalow
Status	Active

Community Information

Address	65 Dawson Drive
Area	Sherwood Park
Subdivision	Davidson Creek
City	Sherwood Park
County	ALBERTA
Province	AB
Postal Code	T8H 1T7

Amenities

Amenities	Air Conditioner
Parking	Double Garage Attached, Heated

Interior

Interior Features	ensuite bathroom
Appliances	Air Conditioning-Central, Dishwasher-Built-In, Dryer, Freezer, Garage Opener, Microwave Hood Fan, Storage Shed, Stove-Gas, Vacuum System Attachments, Vacuum Systems, Washer, Window Coverings, Refrigerators-Two, Projector
Heating	Forced Air-1, Natural Gas
Stories	2
Has Basement	Yes
Basement	Full, Finished

Exterior

Exterior	Wood, Stucco
Exterior Features	Backs Onto Park/Trees, Cul-De-Sac, Fenced, Landscaped, Schools, Shopping Nearby
Roof	Asphalt Shingles
Construction	Wood, Stucco
Foundation	Concrete Perimeter

Additional Information

Date Listed	July 18th, 2025
Days on Market	9

Zoning

Zone 25

DATA IS DEEMED RELIABLE BUT IS NOT GUARANTEED ACCURATE BY THE REALTORS® ASSOCIATION OF EDMONTON. COPYRIGHT 2025 BY THE REALTORS® ASSOCIATION OF EDMONTON. ALL RIGHTS RESERVED. Trademarks are owned or controlled by the Canadian Real Estate Association (CREA) and identify real estate professionals who are members of CREA (REALTOR®, REALTORS®) and/or the quality of services they provide (MLS®, Multiple Listing Service®)

Listing information last updated on July 27th, 2025 at 10:47am MDT