

\$865,555 - 815 Chahley Way, Edmonton

MLS® #E4447153

\$865,555

4 Bedroom, 2.50 Bathroom, 3,276 sqft

Single Family on 0.00 Acres

Cameron Heights (Edmonton), Edmonton, AB

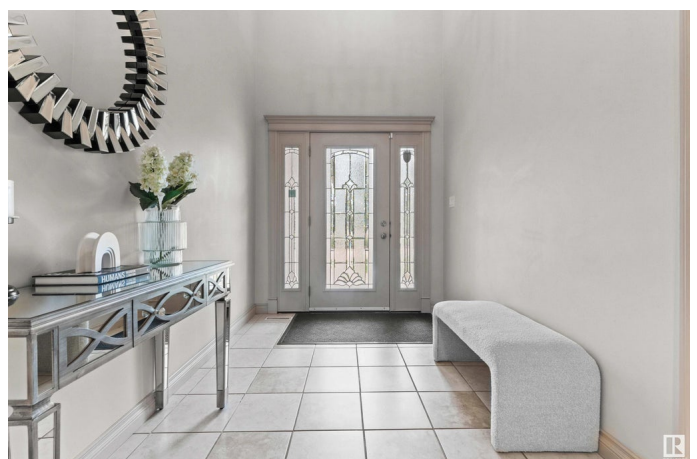
Welcome to this beautifully crafted custom 2-storey by Darrenâ€™s Homes, offering 3,276 sq ft of exceptional living space in one of Edmontonâ€™s most desirable ravine communities. Designed w/luxury & functionality in mind, this 4-bed (up), 3-bathroom home impresses from the moment you arrive, w/its striking stucco exterior & impeccable curb appeal. Step inside to discover a thoughtfully designed MF featuring a chef-inspired kitchen w/a massive 9-ft granite island, high-end appliances inc a 6-burner gas cooktop & double ovens, custom cabinetry, & a walk-through pantry. A formal dining room, bright office/den, spacious living area w/gas FP, & large mudroom complete M-LVL. Upstairs, youâ€™ll find a cozy bonus room, convenient laundry, & 3 generous bedrooms, including a lavish primary suite w/its own private balcony, spa-like 5-piece ensuite w/whirlpool tub, & a custom tiled shower. Additional highlights include central A/C, a massive driveway, heated oversized garage w/car hoist, low-maintenance yard w/huge deck.

Built in 2007

Essential Information

MLS® # E4447153

Price \$865,555



Bedrooms	4
Bathrooms	2.50
Full Baths	2
Half Baths	1
Square Footage	3,276
Acres	0.00
Year Built	2007
Type	Single Family
Sub-Type	Detached Single Family
Style	2 Storey
Status	Active

Community Information

Address	815 Chahley Way
Area	Edmonton
Subdivision	Cameron Heights (Edmonton)
City	Edmonton
County	ALBERTA
Province	AB
Postal Code	T6M 0J3

Amenities

Amenities	Air Conditioner, Carbon Monoxide Detectors, Ceiling 9 ft., Deck, Detectors Smoke, Front Porch, No Animal Home, No Smoking Home, Vinyl Windows
Parking	Double Garage Attached, Heated, Over Sized

Interior

Interior Features	ensuite bathroom
Appliances	Air Conditioning-Central, Dishwasher-Built-In, Dryer, Hood Fan, Refrigerator, Stove-Gas, Washer, Oven Built-In-Two
Heating	Forced Air-1, Natural Gas
Fireplace	Yes
Fireplaces	Glass Door
Stories	2
Has Basement	Yes
Basement	Full, Unfinished

Exterior

Exterior	Wood, Stucco
Exterior Features	Cul-De-Sac, Fenced, Golf Nearby, Playground Nearby, Public Transportation, Schools, Shopping Nearby
Roof	Asphalt Shingles
Construction	Wood, Stucco
Foundation	Concrete Perimeter

School Information

Elementary	Michael A. Kostek School
Middle	S. Bruce Smith School
High	Jasper Place School

Additional Information

Date Listed	July 11th, 2025
Days on Market	5
Zoning	Zone 20
HOA Fees	240
HOA Fees Freq.	Annually

DATA IS DEEMED RELIABLE BUT IS NOT GUARANTEED ACCURATE BY THE REALTORS® ASSOCIATION OF EDMONTON. COPYRIGHT 2025 BY THE REALTORS® ASSOCIATION OF EDMONTON. ALL RIGHTS RESERVED. Trademarks are owned or controlled by the Canadian Real Estate Association (CREA) and identify real estate professionals who are members of CREA (REALTOR®, REALTORS®) and/or the quality of services they provide (MLS®, Multiple Listing Service®)

Listing information last updated on July 16th, 2025 at 5:47am MDT