

## \$539,900 - 216 North Ridge Drive, St. Albert

MLS® #E4445017

**\$539,900**

3 Bedroom, 2.50 Bathroom, 1,936 sqft

Single Family on 0.00 Acres

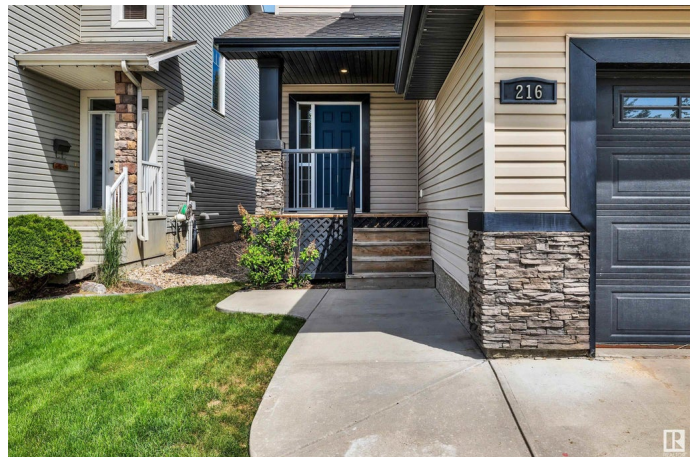
North Ridge, St. Albert, AB

Great space in this 1900 sq. ft. 2 storey in North Ridge just steps to schools, parks and playgrounds! Large kitchen with cappuccino cabinets, stainless steel appliances, granite countertops, tile backsplash and a corner pantry. Spacious living room has a gas fireplace. Upstairs you'll find 3 large bedrooms including a primary with a gorgeous 5 pce ensuite with double sinks and walk-in closet. A huge bonus room is perfect for movie nights or a play room. Nice backyard with a maintenance free deck, storage shed and plenty of room for a trampoline. Newer tankless water heater. Double attached garage. A great neighborhood for your growing family! Some photos have been virtually staged.

Built in 2011

### Essential Information

MLS® #	E4445017
Price	\$539,900
Bedrooms	3
Bathrooms	2.50
Full Baths	2
Half Baths	1
Square Footage	1,936
Acres	0.00



Year Built	2011
Type	Single Family
Sub-Type	Detached Single Family
Style	2 Storey
Status	Active

### **Community Information**

Address	216 North Ridge Drive
Area	St. Albert
Subdivision	North Ridge
City	St. Albert
County	ALBERTA
Province	AB
Postal Code	T8N 3K1

### **Amenities**

Amenities	Deck, Hot Water Tankless, No Smoking Home, Vinyl Windows, Natural Gas BBQ Hookup
Parking Spaces	4
Parking	Double Garage Attached

### **Interior**

Interior Features	ensuite bathroom
Appliances	Dishwasher-Built-In, Dryer, Garage Control, Garage Opener, Microwave Hood Fan, Refrigerator, Storage Shed, Stove-Electric, Washer, Window Coverings
Heating	Forced Air-1, Natural Gas
Fireplace	Yes
Fireplaces	Tile Surround
Stories	2
Has Basement	Yes
Basement	Full, Unfinished

### **Exterior**

Exterior	Wood, Stone, Vinyl
Exterior Features	Fenced, Golf Nearby, Landscaped, No Back Lane, Playground Nearby, Public Transportation, Schools, Shopping Nearby
Roof	Asphalt Shingles
Construction	Wood, Stone, Vinyl

Foundation                      Concrete Perimeter

**Additional Information**

Date Listed                      June 29th, 2025  
Days on Market                12  
Zoning                              Zone 24

DATA IS DEEMED RELIABLE BUT IS NOT GUARANTEED ACCURATE BY THE REALTORS® ASSOCIATION OF EDMONTON. COPYRIGHT 2025 BY THE REALTORS® ASSOCIATION OF EDMONTON. ALL RIGHTS RESERVED.Trademarks are owned or controlled by the Canadian Real Estate Association (CREA) and identify real estate professionals who are members of CREA (REALTOR®, REALTORS®) and/or the quality of services they provide (MLS®, Multiple Listing Service®)  
Listing information last updated on July 11th, 2025 at 8:32pm MDT