

\$109,900 - 317 1945 105 Street, Edmonton

MLS® #E4444558

\$109,900

2 Bedroom, 1.00 Bathroom, 824 sqft

Condo / Townhouse on 0.00 Acres

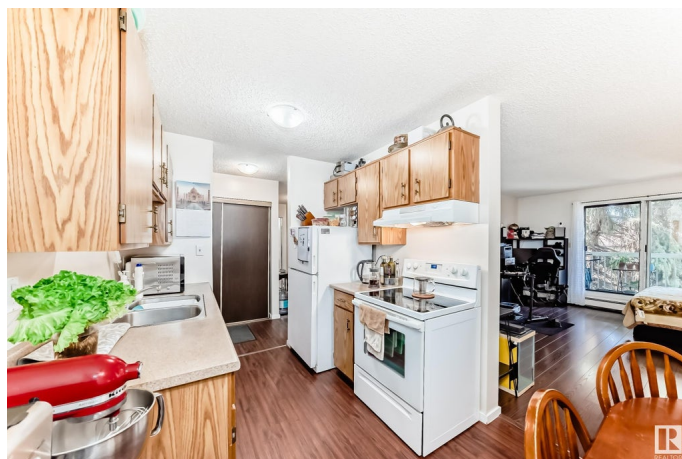
Keheewin, Edmonton, AB

This well-maintained 2-bedroom condo is located in the mature and sought-after neighborhood of Keheewin. Offering two generously sized bedrooms and a convenient in-suite storage area, the unit features neutral tones and stylish laminate flooring throughout. Enjoy the peaceful view of mature trees from your private balcony, adding a touch of tranquility to everyday living. The building is clean and well-cared for, creating a welcoming environment. Ideally situated within walking distance to schools, parks, shopping, and public transit, this home also provides quick and easy access to South Common and the Anthony Henday, making commuting a breeze. Perfect for first-time buyers, downsizers, or investors!

Built in 1981

Essential Information

MLS® #	E4444558
Price	\$109,900
Bedrooms	2
Bathrooms	1.00
Full Baths	1
Square Footage	824
Acres	0.00
Year Built	1981



Type	Condo / Townhouse
Sub-Type	Lowrise Apartment
Style	Single Level Apartment
Status	Active

Community Information

Address	317 1945 105 Street
Area	Edmonton
Subdivision	Keheewin
City	Edmonton
County	ALBERTA
Province	AB
Postal Code	T6J 5N6

Amenities

Amenities	No Smoking Home
Parking	Stall

Interior

Appliances	Hood Fan, Refrigerator, Stove-Electric
Heating	Baseboard, Natural Gas
# of Stories	4
Stories	4
Has Basement	Yes
Basement	None, No Basement

Exterior

Exterior	Wood, Vinyl
Exterior Features	Public Transportation, Schools, Shopping Nearby
Roof	Asphalt Shingles
Construction	Wood, Vinyl
Foundation	Concrete Perimeter

Additional Information

Date Listed	June 26th, 2025
Days on Market	6
Zoning	Zone 16
Condo Fee	\$476

DATA IS DEEMED RELIABLE BUT IS NOT GUARANTEED ACCURATE BY THE REALTORS® ASSOCIATION OF

EDMONTON. COPYRIGHT 2025 BY THE REALTORS® ASSOCIATION OF EDMONTON. ALL RIGHTS RESERVED.Trademarks are owned or controlled by the Canadian Real Estate Association (CREA) and identify real estate professionals who are members of CREA (REALTOR®, REALTORS®) and/or the quality of services they provide (MLS®, Multiple Listing Service®)

Listing information last updated on July 2nd, 2025 at 4:47pm MDT