

\$674,800 - 1914 159 Street, Edmonton

MLS® #E4444409

\$674,800

4 Bedroom, 3.50 Bathroom, 1,930 sqft

Single Family on 0.00 Acres

Glenridding Ravine, Edmonton, AB

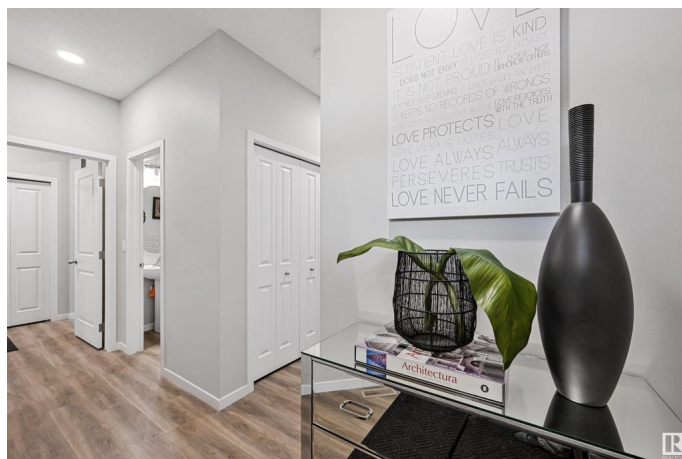
Like new gorgeous upgraded Morrison 2 story nestled on a quiet street in Glenridding Ravine, just steps to the pond & ravine. Approximately 2600sf of total living space as the basement is professionally finished! Upgrades galore w/ over \$75,000 in extras. Dream kitchen w/ upgraded Bosch appliances including a gas stove & two ovens. There's even a Butler's pantry w/ a beverage cooler! Upgraded cabinetry & flooring throughout. Open concept plan is the perfect main floor entertaining space. Plus main flr den. Upstairs find a bonus rm & laundry. 3 bedrms incl a luxurious primary suite featuring an ensuite w/an oversized tiled shower & dual sinks. LPV flooring in the bedrms! Lower level has a family rm, bedrm, 3 pc bath, storage & a flex area. Huge mudrm, lots of storage built-ins & a dbl garage w/extra depth on one side (can accommodate an extended cab pickup). Large exterior patio w/ pergola as well! Restaurants & shops close by incl Windermere Currents & Edm South Cm. Easy access to EIA & the Anthony Henday

Built in 2022

Essential Information

MLS® # E4444409

Price \$674,800



Bedrooms	4
Bathrooms	3.50
Full Baths	3
Half Baths	1
Square Footage	1,930
Acres	0.00
Year Built	2022
Type	Single Family
Sub-Type	Detached Single Family
Style	2 Storey
Status	Active

Community Information

Address	1914 159 Street
Area	Edmonton
Subdivision	Glenridding Ravine
City	Edmonton
County	ALBERTA
Province	AB
Postal Code	T6W 4X7

Amenities

Amenities	Ceiling 9 ft., Detectors Smoke, Vinyl Windows, HRV System
Parking	Double Garage Attached

Interior

Interior Features	ensuite bathroom
Appliances	Dishwasher-Built-In, Dryer, Garage Control, Garage Opener, Hood Fan, Oven-Built-In, Oven-Microwave, Refrigerator, Stove-Countertop Gas, Washer, Window Coverings, Wine/Beverage Cooler
Heating	Forced Air-1, Natural Gas
Fireplace	Yes
Fireplaces	Insert
Stories	3
Has Basement	Yes
Basement	Full, Finished

Exterior

Exterior	Wood, Stone, Vinyl
----------	--------------------

Exterior Features	Airport Nearby, Back Lane, Public Transportation, Schools, Shopping Nearby
Roof	Asphalt Shingles
Construction	Wood, Stone, Vinyl
Foundation	Concrete Perimeter

School Information

Elementary	DrArmour/JoanCarr
Middle	DonaldGetty/JoanCarr
High	DrAnderson/FMMcCaffery

Additional Information

Date Listed	June 26th, 2025
Days on Market	20
Zoning	Zone 56

DATA IS DEEMED RELIABLE BUT IS NOT GUARANTEED ACCURATE BY THE REALTORS® ASSOCIATION OF EDMONTON. COPYRIGHT 2025 BY THE REALTORS® ASSOCIATION OF EDMONTON. ALL RIGHTS RESERVED.Trademarks are owned or controlled by the Canadian Real Estate Association (CREA) and identify real estate professionals who are members of CREA (REALTOR®, REALTORS®) and/or the quality of services they provide (MLS®, Multiple Listing Service®)

Listing information last updated on July 16th, 2025 at 5:32pm MDT