

\$275,000 - 224 503 Albany Way, Edmonton

MLS® #E4443013

\$275,000

2 Bedroom, 2.00 Bathroom, 936 sqft

Condo / Townhouse on 0.00 Acres

Albany, Edmonton, AB

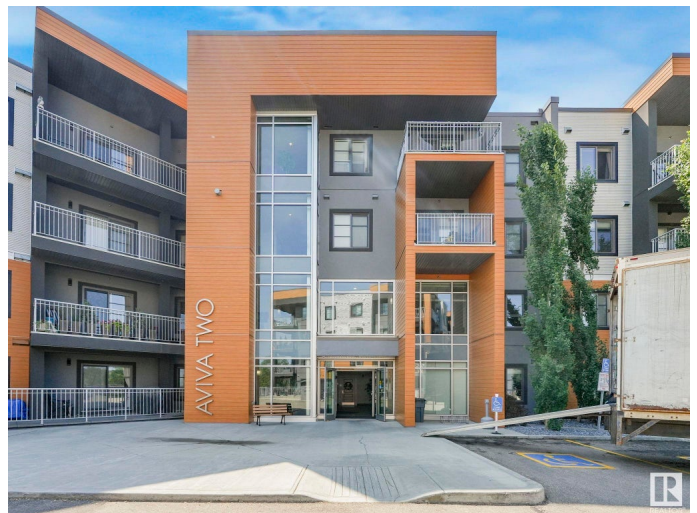
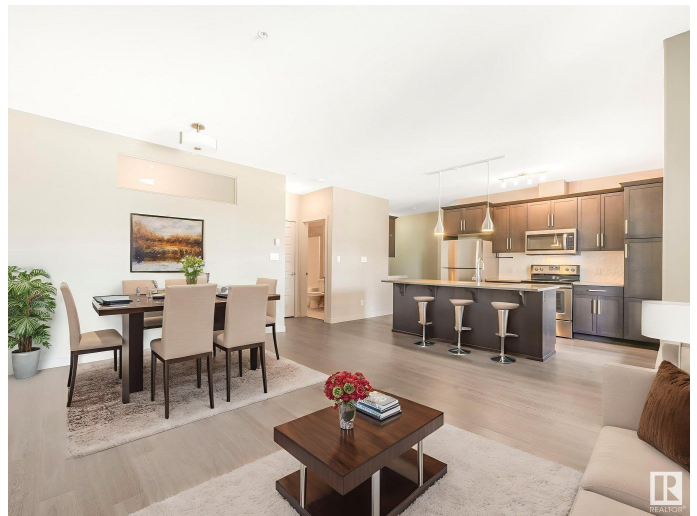
Modern 2 Bed, 2 Bath Condo with Underground & Surface Parking – Aviva Condominiums, Edmonton Welcome to this spacious 940 sq ft condo in the sought-after Aviva Condominiums, offering modern comfort and convenience in north Edmonton. This FRESHLY PAINTED 2 bedroom, 2 bathroom unit features an open-concept layout with granite countertops, stylish cabinetry, and a functional kitchen perfect for entertaining. Enjoy your morning coffee or evening relaxation on the private balcony. The primary bedroom includes a walk in closet and 3 pc ensuite, while the second bedroom is ideal for guests, a roommate, or a home office. Additional highlights include in-suite laundry, one underground heated parking stall and one surface stall, providing convenience year-round. Second 4 piece bath. Condo fees of \$452.34/month include heat and water, making for easy budgeting. Enjoy access to building amenities and a great location close to shopping, transit, and major roadways. Perfect for first-time buyers, downsizers/ investors!

Built in 2016

Essential Information

MLS® # E4443013

Price \$275,000



Bedrooms	2
Bathrooms	2.00
Full Baths	2
Square Footage	936
Acres	0.00
Year Built	2016
Type	Condo / Townhouse
Sub-Type	Lowrise Apartment
Style	Single Level Apartment
Status	Active

Community Information

Address	224 503 Albany Way
Area	Edmonton
Subdivision	Albany
City	Edmonton
County	ALBERTA
Province	AB
Postal Code	T6V 0M5

Amenities

Amenities	Closet Organizers, Deck, Hot Water Natural Gas, Parking-Visitor, Television Connection
Parking Spaces	2
Parking	Heated, Stall, Underground

Interior

Interior Features	ensuite bathroom
Appliances	Dishwasher-Built-In, Microwave Hood Fan, Refrigerator, Stacked Washer/Dryer, Stove-Electric, Window Coverings
Heating	Baseboard, Natural Gas
# of Stories	4
Stories	4
Has Basement	Yes
Basement	None, No Basement

Exterior

Exterior	Wood, Metal, Stucco
Exterior Features	Golf Nearby, Landscaped, Park/Reserve, Picnic Area, Playground

	Nearby, Public Transportation, Schools, Shopping Nearby
Roof	Asphalt Shingles
Construction	Wood, Metal, Stucco
Foundation	Concrete Perimeter

Additional Information

Date Listed	June 18th, 2025
Days on Market	10
Zoning	Zone 27
Condo Fee	\$452

DATA IS DEEMED RELIABLE BUT IS NOT GUARANTEED ACCURATE BY THE REALTORS® ASSOCIATION OF EDMONTON. COPYRIGHT 2025 BY THE REALTORS® ASSOCIATION OF EDMONTON. ALL RIGHTS RESERVED. Trademarks are owned or controlled by the Canadian Real Estate Association (CREA) and identify real estate professionals who are members of CREA (REALTOR®, REALTORS®) and/or the quality of services they provide (MLS®, Multiple Listing Service®)

Listing information last updated on June 27th, 2025 at 11:32pm MDT