

\$1,260,000 - 51531 Highway 770, Rural Parkland County

MLS® #E4442987

\$1,260,000

7 Bedroom, 4.50 Bathroom, 2,961 sqft

Rural on 153.50 Acres

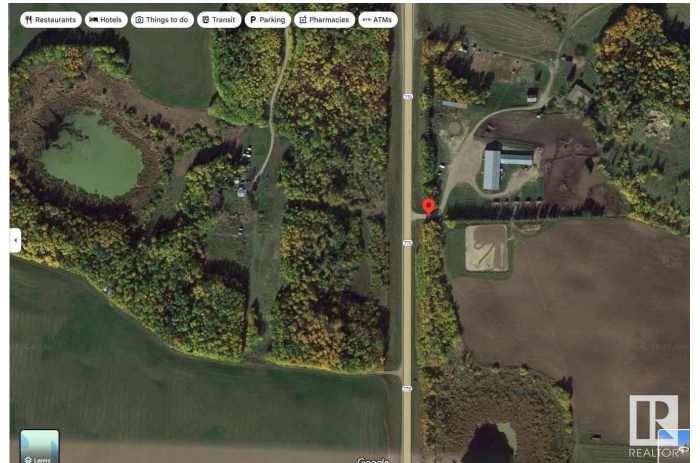
None, Rural Parkland County, AB

This is a 2,948 sq ft bungalow-style single-family home built in 1976. It includes a 984 sq ft in-law suite addition at the rear, completed around 1990. The home sits on a partial, developed basementâ€”note that the in-law suite does not have a basement beneath. Exterior is stucco with asphalt shingle roof. The shingles were replaced in 2008 and appear to be in average overall condition. A large, enclosed sunroom extends off the rear of the home & addition. Main Level has 7 bdrms, 3 full bathrooms, 1 half bath .2 kitchens (one in the main home, one in the in-law suite). Large living room with a stone-faced fireplace, Secondary kitchenette in the in-law suite. Basement is f/f & includes a renovated bathroom. 60' x 150' indoor riding arena and an att'd 32' x 120' barn. The 60' x 150' indoor riding arena and the attached 32' x 120' barn are located in the southwestern corner.

Built in 1976

Essential Information

MLS® #	E4442987
Price	\$1,260,000
Bedrooms	7
Bathrooms	4.50
Full Baths	4
Half Baths	1



Square Footage	2,961
Acres	153.50
Year Built	1976
Type	Rural
Sub-Type	Detached Single Family
Style	Bungalow
Status	Active

Community Information

Address	51531 Highway 770
Area	Rural Parkland County
Subdivision	None
City	Rural Parkland County
County	ALBERTA
Province	AB
Postal Code	T7X 1X5

Amenities

Features	See Remarks
Parking Spaces	7

Interior

Interior Features	ensuite bathroom
Heating	Forced Air-2, Natural Gas
Fireplace	Yes
Stories	1
Has Basement	Yes
Basement	Full, Partially Finished

Exterior

Exterior	Wood
Exterior Features	Corner Lot, Cross Fenced, Golf Nearby, Landscaped
Construction	Wood
Foundation	Concrete Perimeter

Additional Information

Date Listed	June 18th, 2025
Days on Market	28
Zoning	Zone 90

DATA IS DEEMED RELIABLE BUT IS NOT GUARANTEED ACCURATE BY THE REALTORS® ASSOCIATION OF EDMONTON. COPYRIGHT 2025 BY THE REALTORS® ASSOCIATION OF EDMONTON. ALL RIGHTS RESERVED.Trademarks are owned or controlled by the Canadian Real Estate Association (CREA) and identify real estate professionals who are members of CREA (REALTOR®, REALTORS®) and/or the quality of services they provide (MLS®, Multiple Listing Service®)

Listing information last updated on July 16th, 2025 at 4:47pm MDT