

\$650,000 - 4206 Chichak Close, Edmonton

MLS® #E4442060

\$650,000

4 Bedroom, 3.50 Bathroom, 2,145 sqft

Single Family on 0.00 Acres

Chappelle Area, Edmonton, AB

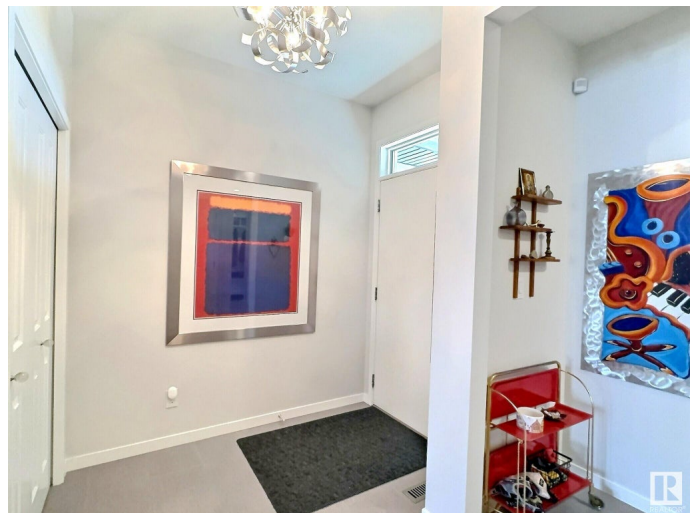
This gorgeous 4-bedroom, 3.5-bathroom house is a showcase of elegance with over 2800sq.ft. of upgraded living, including finished basement and a maintenance-free yard. From the moment you walk in, you're welcomed into luxury with spacious design and soaring 9ft ceilings. The open concept living area, which overlooks the living room with a stone fireplace, and connected dining room. A chef's kitchen complete with full-height cabinets, stainless appliances including a gas cooktop, and an apron sink nestled in a generous island under the glow of Murano glass pendants. Step outside to a covered deck leading to a tree-lined yard with artificial turf. A stunning walk-through pantry leads the mudroom and access the garage. Upstairs, a spacious bonus room, the primary bedroom with a walk-in closet and a luxurious 5-piece ensuite. Two additional bedrooms, a well-appointed bathroom, and a laundry room complete the upper level. Basement offers a large media room, plus an additional bedroom and bathroom. MUST SEE!

Built in 2018

Essential Information

MLS® # E4442060

Price \$650,000



Bedrooms	4
Bathrooms	3.50
Full Baths	3
Half Baths	1
Square Footage	2,145
Acres	0.00
Year Built	2018
Type	Single Family
Sub-Type	Detached Single Family
Style	2 Storey
Status	Active

Community Information

Address	4206 Chichak Close
Area	Edmonton
Subdivision	Chappelle Area
City	Edmonton
County	ALBERTA
Province	AB
Postal Code	T6W 4B3

Amenities

Amenities	Air Conditioner, Ceiling 9 ft., Deck, HRV System, Natural Gas BBQ Hookup
Parking	Double Garage Attached

Interior

Interior Features	ensuite bathroom
Appliances	Air Conditioning-Central, Dishwasher-Built-In, Dryer, Hood Fan, Oven-Built-In, Oven-Microwave, Refrigerator, Stove-Countertop Gas, Washer, Window Coverings
Heating	Forced Air-1, Natural Gas
Stories	3
Has Basement	Yes
Basement	Full, Finished

Exterior

Exterior	Wood, Stone, Vinyl
Exterior Features	Fenced, Golf Nearby, Low Maintenance Landscape, Playground Nearby,

Public Transportation, Schools, Shopping Nearby

Roof	Asphalt Shingles
Construction	Wood, Stone, Vinyl
Foundation	Concrete Perimeter

School Information

Elementary	Donald R Getty
Middle	Donald R Getty
High	Dr. Anne Anderson

Additional Information

Date Listed	June 12th, 2025
Days on Market	37
Zoning	Zone 55
HOA Fees	447.3
HOA Fees Freq.	Annually

DATA IS DEEMED RELIABLE BUT IS NOT GUARANTEED ACCURATE BY THE REALTORS® ASSOCIATION OF EDMONTON. COPYRIGHT 2025 BY THE REALTORS® ASSOCIATION OF EDMONTON. ALL RIGHTS RESERVED.Trademarks are owned or controlled by the Canadian Real Estate Association (CREA) and identify real estate professionals who are members of CREA (REALTOR®, REALTORS®) and/or the quality of services they provide (MLS®, Multiple Listing Service®)

Listing information last updated on July 19th, 2025 at 1:02am MDT