

\$189,900 - 104 1620 48 Street, Edmonton

MLS® #E4440790

\$189,900

3 Bedroom, 2.00 Bathroom, 1,248 sqft

Condo / Townhouse on 0.00 Acres

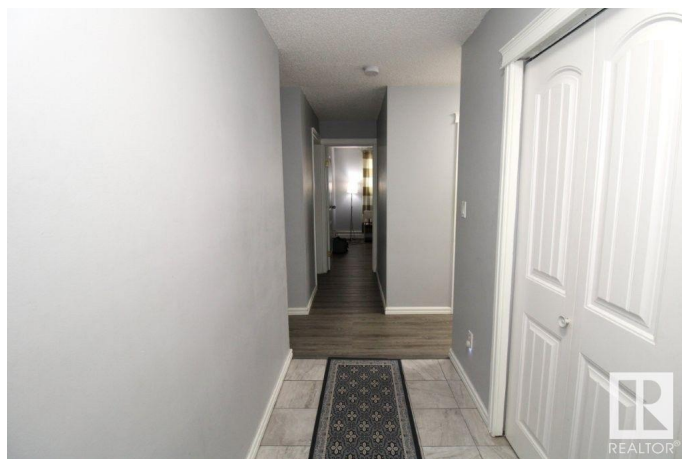
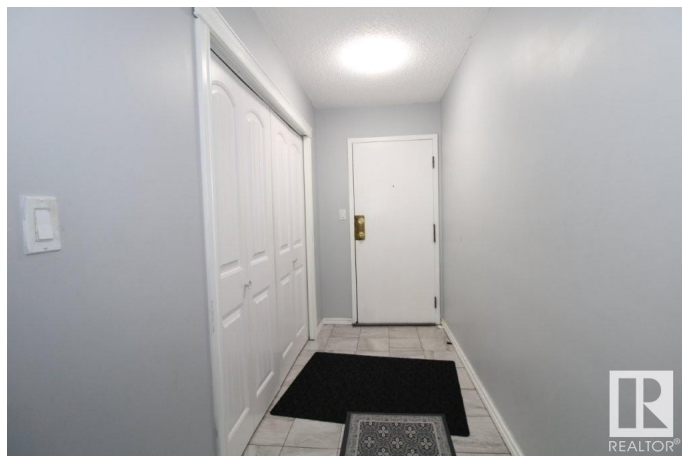
Pollard Meadows, Edmonton, AB

THIS BRIGHT AND UPDATED 3 BEDROOM, 2 BATH APARTMENT IS MOVE IN READY AND PERFECTLY LOCATED IN THE HEART OF MILLWOODS, COMMUNITY OF POLLARD MEADOWS. THIS SPACIOUS UNIT OFFERS A BRIGHT AND OPEN LAYOUT. A FUNCTIONAL KITCHEN IS PERFECT FOR EVERYDAY LIVING. ITS A GREAT FIT FOR FAMILIES, FIRST TIME BUYERS OR ANYONE LOOKING FOR LOW-MAINTENANCE HOME. YOU'LL LOVE BEING JUST STEPS AWAY FROM SHOPPING, SCHOOLS, PUBLIC TRANSIT, PARKS AND ALL THE AMENITIES YOU NEED. WHETHER YOU ARE A FIRST TIME BUYER, A DOWNSIZER, OR AN INVESTER-THIS ONE CHECKS ALL THE BOXES. A GREAT PLACE TO CALL HOME.

Built in 1981

Essential Information

| | |
|----------------|-----------|
| MLS® # | E4440790 |
| Price | \$189,900 |
| Bedrooms | 3 |
| Bathrooms | 2.00 |
| Full Baths | 2 |
| Square Footage | 1,248 |
| Acres | 0.00 |
| Year Built | 1981 |



| | |
|----------|------------------------|
| Type | Condo / Townhouse |
| Sub-Type | Lowrise Apartment |
| Style | Single Level Apartment |
| Status | Active |

Community Information

| | |
|-------------|--------------------|
| Address | 104 1620 48 Street |
| Area | Edmonton |
| Subdivision | Pollard Meadows |
| City | Edmonton |
| County | ALBERTA |
| Province | AB |
| Postal Code | T6L 5P1 |

Amenities

| | |
|-----------|--|
| Amenities | Intercom, No Animal Home, No Smoking Home, Parking-Plug-Ins, See Remarks |
| Parking | No Garage, Stall, See Remarks |

Interior

| | |
|-------------------|---|
| Interior Features | ensuite bathroom |
| Appliances | Dishwasher-Built-In, Hood Fan, Intercom, Refrigerator, Stove-Electric, See Remarks, Curtains and Blinds |
| Heating | Baseboard, See Remarks, Natural Gas |
| # of Stories | 4 |
| Stories | 4 |
| Has Basement | Yes |
| Basement | None, No Basement |

Exterior

| | |
|-------------------|---|
| Exterior | Wood, Stucco, See Remarks |
| Exterior Features | Commercial, Landscaped, Low Maintenance Landscape, Park/Reserve, Public Transportation, Schools, Shopping Nearby, See Remarks |
| Roof | Asphalt Shingles |
| Construction | Wood, Stucco, See Remarks |
| Foundation | Concrete Perimeter |

School Information

| | |
|------------|-----------------|
| Elementary | POLLARD MEADOWS |
|------------|-----------------|

Additional Information

| | |
|----------------|----------------|
| Date Listed | June 6th, 2025 |
| Days on Market | 10 |
| Zoning | Zone 29 |
| Condo Fee | \$714 |

DATA IS DEEMED RELIABLE BUT IS NOT GUARANTEED ACCURATE BY THE REALTORS® ASSOCIATION OF EDMONTON. COPYRIGHT 2025 BY THE REALTORS® ASSOCIATION OF EDMONTON. ALL RIGHTS RESERVED.Trademarks are owned or controlled by the Canadian Real Estate Association (CREA) and identify real estate professionals who are members of CREA (REALTOR®, REALTORS®) and/or the quality of services they provide (MLS®, Multiple Listing Service®)

Listing information last updated on June 16th, 2025 at 11:47am MDT