

\$730,000 - 11028 84 Avenue, Edmonton

MLS® #E4440780

\$730,000

5 Bedroom, 3.50 Bathroom, 1,566 sqft

Single Family on 0.00 Acres

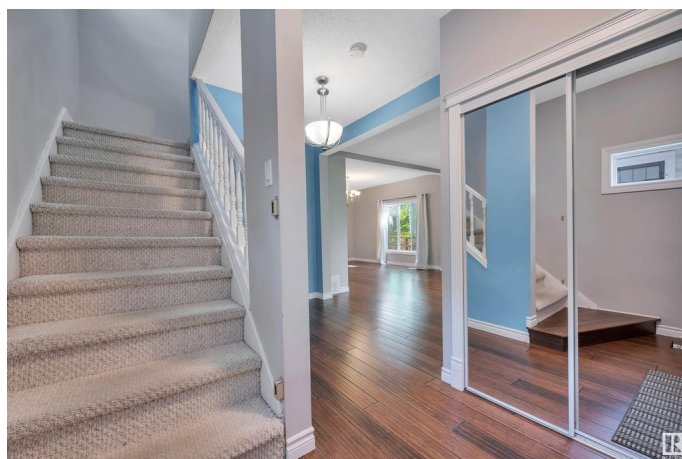
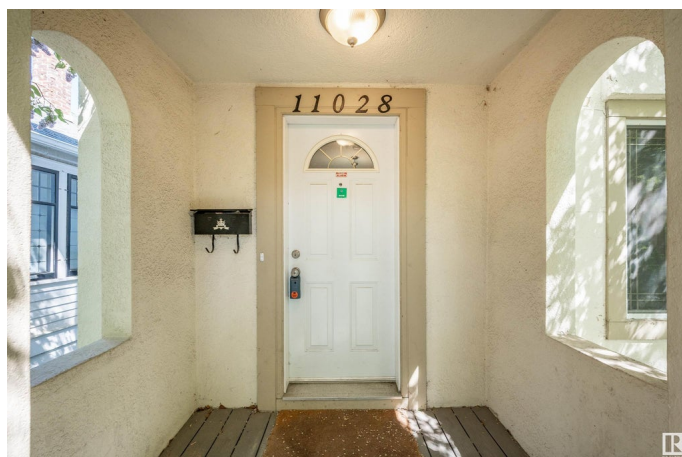
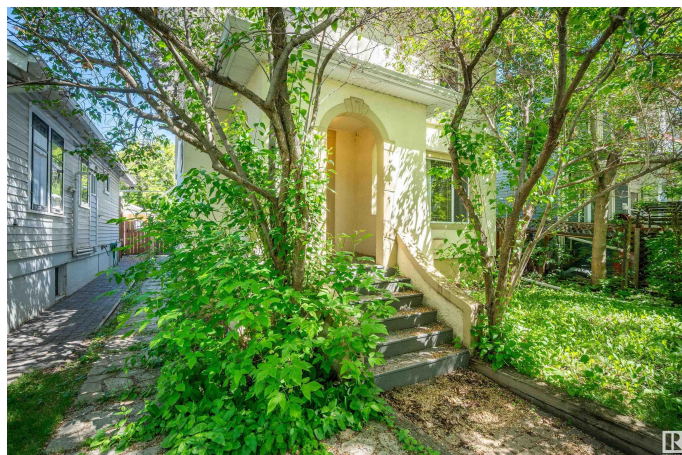
Garneau, Edmonton, AB

Charming Garneau century home offering the perfect blend of historic character and modern upgrades. This beautifully renovated two-storey features 5 bedrooms, 3.5 bathrooms, and a fully finished basement with second kitchen, laundry, and private entry. Tastefully updated with a newer roof, attic insulation, renovated ensuite, a renovated kitchen with granite counters, newer hardwood (main), upgraded plumbing, and new basement windows. The home sits on a large lot with mature trees and an unbeatable location just steps from the University of Alberta. The newer, oversized double garage adds plenty of storage and function. A rare opportunity to own a piece of Edmonton's history with the comfort of today's standards.

Built in 1914

Essential Information

MLS® #	E4440780
Price	\$730,000
Bedrooms	5
Bathrooms	3.50
Full Baths	3
Half Baths	1
Square Footage	1,566
Acres	0.00



Year Built	1914
Type	Single Family
Sub-Type	Detached Single Family
Style	2 Storey
Status	Active

Community Information

Address	11028 84 Avenue
Area	Edmonton
Subdivision	Garneau
City	Edmonton
County	ALBERTA
Province	AB
Postal Code	T6E 0V7

Amenities

Amenities	Deck, Front Porch, Insulation-Upgraded, See Remarks
Parking	Double Garage Detached

Interior

Interior Features	ensuite bathroom
Appliances	Dishwasher-Built-In, Microwave Hood Fan, Oven-Microwave, Window Coverings, See Remarks, Dryer-Two, Refrigerators-Two, Stoves-Two, Washers-Two
Heating	Forced Air-1, Natural Gas
Fireplace	Yes
Fireplaces	Brick Facing
Stories	3
Has Suite	Yes
Has Basement	Yes
Basement	Full, Finished

Exterior

Exterior	Wood, Stucco
Exterior Features	Fenced, Playground Nearby, Public Transportation, Schools, Shopping Nearby, Treed Lot
Roof	Asphalt Shingles
Construction	Wood, Stucco
Foundation	Block

Additional Information

Date Listed June 6th, 2025
Days on Market 17
Zoning Zone 15

DATA IS DEEMED RELIABLE BUT IS NOT GUARANTEED ACCURATE BY THE REALTORS® ASSOCIATION OF EDMONTON. COPYRIGHT 2025 BY THE REALTORS® ASSOCIATION OF EDMONTON. ALL RIGHTS RESERVED.Trademarks are owned or controlled by the Canadian Real Estate Association (CREA) and identify real estate professionals who are members of CREA (REALTOR®, REALTORS®) and/or the quality of services they provide (MLS®, Multiple Listing Service®)
Listing information last updated on June 23rd, 2025 at 1:32pm MDT