

# **\$318,000 - 70 52343 Rge Road 211, Rural Strathcona County**

MLS® #E4440324

**\$318,000**

2 Bedroom, 1.00 Bathroom, 638 sqft

Rural on 0.58 Acres

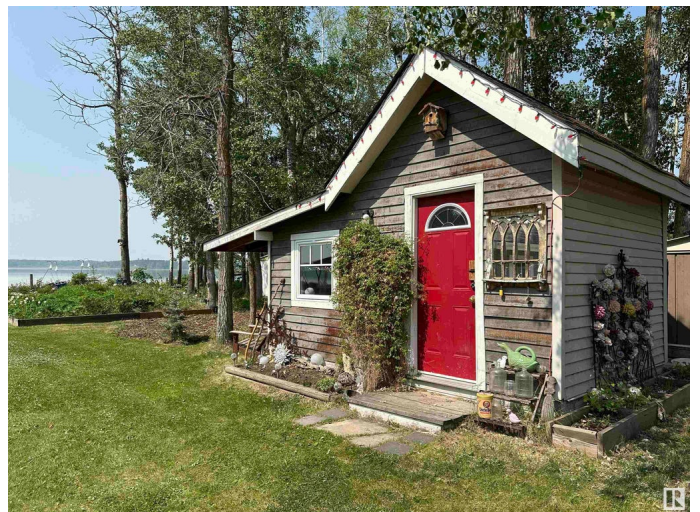
Antler Lake, Rural Strathcona County, AB

Meticulously cared for OPEN CONCEPT COTTAGE on a LARGE DOUBLE WATERFRONT LOT ( .58 acre ) with stunning view of Antler Lake is now ready for you to enjoy the summer! This bright and relaxing FOUR SEASON cottage features TWO BEDROOM areas with lofts, a LARGE 3 Piece bathroom combined laundry room area complete with a FREESTANDING TUB and LARGE FARMHOUSE SINK. A functional and well designed kitchen that opens up into the living-room with spectacular views of Antler Lake. This beautiful property also includes a separate quaint STUDIO SPACE with electricity that currently acts as extra space for guests! Enjoy this beautiful 4-season cottage as is, or utilize the HUGE DOUBLE LOT to build your lakefront dream home ! Current features of this property include MUNICIPAL WATER and MUNICIPAL SEPTIC, and GAS LINE currently to dwelling.

Built in 1970

## **Essential Information**

MLS® #	E4440324
Price	\$318,000
Bedrooms	2
Bathrooms	1.00



Full Baths	1
Square Footage	638
Acres	0.58
Year Built	1970
Type	Rural
Sub-Type	Detached Single Family
Style	Bungalow
Status	Active

### Community Information

Address	70 52343 Rge Road 211
Area	Rural Strathcona County
Subdivision	Antler Lake
City	Rural Strathcona County
County	ALBERTA
Province	AB
Postal Code	T8G 1A6

### Amenities

Features	Hot Water Electric, Lake Privileges, No Smoking Home, Open Beam, R.V. Storage
----------	---

### Interior

Heating	Baseboard, Wood Stove, Electric, See Remarks
Fireplace	Yes
Stories	1
Has Basement	Yes
Basement	None, No Basement

### Exterior

Exterior	Wood
Exterior Features	Backs Onto Lake, Boating, Fenced, Flat Site, Lake Access Property, Lake View, Level Land, Schools, Waterfront Property
Construction	Wood
Foundation	Preserved Wood

### Additional Information

Date Listed	June 4th, 2025
Days on Market	20

## Zoning

## Zone 84

DATA IS DEEMED RELIABLE BUT IS NOT GUARANTEED ACCURATE BY THE REALTORS® ASSOCIATION OF EDMONTON. COPYRIGHT 2025 BY THE REALTORS® ASSOCIATION OF EDMONTON. ALL RIGHTS RESERVED. Trademarks are owned or controlled by the Canadian Real Estate Association (CREA) and identify real estate professionals who are members of CREA (REALTOR®, REALTORS®) and/or the quality of services they provide (MLS®, Multiple Listing Service®)

Listing information last updated on June 24th, 2025 at 4:48pm MDT