

\$374,702 - 10319 135a Avenue, Edmonton

MLS® #E4439783

\$374,702

5 Bedroom, 2.00 Bathroom, 1,046 sqft
Single Family on 0.00 Acres

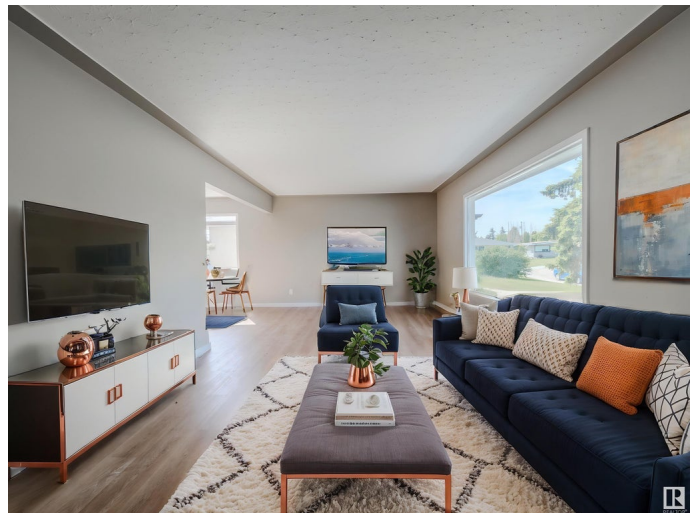
Rosslyn, Edmonton, AB

BRAND NEW KITCHEN.....BRAND NEW CARPET AND PAINT.....ACROSS THE ROAD FROM Rosslyn PARK.....BASEMENT IS ALL SHINED UP...CURB APPEAL CUTE AS A BUTTON.....BRAND NEW LUXURY VINYL PLANK~!WELCOME HOME!~ there are more renovations of late I can't fit them all in this description...Fresh curb appeal invites inside. Classic front entrance with some historic wood accents and dividers, BIG WINDOW over looks the park. Dining flex at the back, and attached is the EPIC kitchen, with brand new stainless appliances, and Quartz countertops. Down the hall is 3 big bedrooms, and a fully renovated BRAND NEW BATHROOM:) the separate entrance at the back has shared laundry downstairs. basement ..YES new carpet has a classic kitchen, another bathroom and bedroom down the hall. Single oversized garage, established yard and more...oh did we mention new ROOF in 2024 also...

Built in 1959

Essential Information

| | |
|------------|-----------|
| MLS® # | E4439783 |
| Price | \$374,702 |
| Bedrooms | 5 |
| Bathrooms | 2.00 |
| Full Baths | 2 |



| | |
|----------------|------------------------|
| Square Footage | 1,046 |
| Acres | 0.00 |
| Year Built | 1959 |
| Type | Single Family |
| Sub-Type | Detached Single Family |
| Style | Bungalow |
| Status | Active |

Community Information

| | |
|-------------|-------------------|
| Address | 10319 135a Avenue |
| Area | Edmonton |
| Subdivision | Rosslyn |
| City | Edmonton |
| County | ALBERTA |
| Province | AB |
| Postal Code | T5E 2S8 |

Amenities

| | |
|-----------|------------------------------------|
| Amenities | See Remarks |
| Parking | Over Sized, Single Garage Detached |

Interior

| | |
|--------------|---|
| Appliances | Hood Fan, Washer, Refrigerators-Two, Stoves-Two |
| Heating | Forced Air-1, Natural Gas |
| Stories | 2 |
| Has Basement | Yes |
| Basement | Full, Finished |

Exterior

| | |
|-------------------|---|
| Exterior | Wood, Vinyl |
| Exterior Features | Back Lane, Fenced, Flat Site, Landscaped, Playground Nearby, Public Transportation, Schools, Shopping Nearby, See Remarks |
| Roof | Asphalt Shingles |
| Construction | Wood, Vinyl |
| Foundation | Concrete Perimeter |

Additional Information

| | |
|----------------|----------------|
| Date Listed | June 1st, 2025 |
| Days on Market | 4 |

Zoning

Zone 01

DATA IS DEEMED RELIABLE BUT IS NOT GUARANTEED ACCURATE BY THE REALTORS® ASSOCIATION OF EDMONTON. COPYRIGHT 2025 BY THE REALTORS® ASSOCIATION OF EDMONTON. ALL RIGHTS RESERVED. Trademarks are owned or controlled by the Canadian Real Estate Association (CREA) and identify real estate professionals who are members of CREA (REALTOR®, REALTORS®) and/or the quality of services they provide (MLS®, Multiple Listing Service®)

Listing information last updated on June 5th, 2025 at 3:32am MDT