

# **\$399,900 - 8523 138 Avenue, Edmonton**

MLS® #E4438209

**\$399,900**

4 Bedroom, 2.00 Bathroom, 975 sqft

Single Family on 0.00 Acres

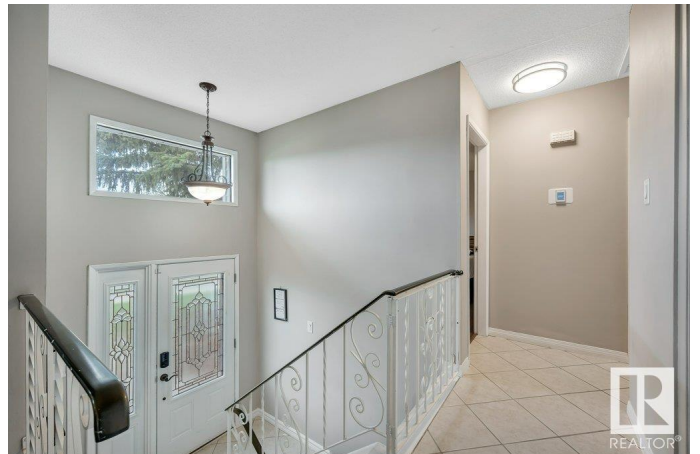
Northmount (Edmonton), Edmonton, AB

Extensively UPDATED and well maintained bi-level in a family-friendly neighbourhood! This MOVE-IN READY 4 bedrooms, 2-bath home with an OVERSIZED DOUBLE GARAGE (24 x 24) with additional RV Parking features a bright main floor with an updated kitchen with newer appliances and counters, 2 bedrooms and a refreshed 4-pc bathroom. Enjoy year-round comfort with CENTRAL A/C! A fully finished basement with another 2 good sized bedrooms, a 3-pc bath and a cozy gas fireplace in your second living room. Enjoy a south-facing flat fenced backyard with a newer deck for our upcoming hot summer days! Additional upgrades include new washer/dryer, windows, concrete steps, fence, gutters, and sod. Close to daycares, schools, shopping, and transit. Thoughtfully upgraded with comfort and convenience in mind—just move in and enjoy!

Built in 1971

## **Essential Information**

MLS® #	E4438209
Price	\$399,900
Bedrooms	4
Bathrooms	2.00
Full Baths	2
Square Footage	975



Acres	0.00
Year Built	1971
Type	Single Family
Sub-Type	Detached Single Family
Style	Bi-Level
Status	Active

### Community Information

Address	8523 138 Avenue
Area	Edmonton
Subdivision	Northmount (Edmonton)
City	Edmonton
County	ALBERTA
Province	AB
Postal Code	T5E 2A3

### Amenities

Amenities	Air Conditioner, Deck, Hot Water Natural Gas, No Smoking Home
Parking	Double Garage Detached, Over Sized

### Interior

Appliances	Air Conditioning-Central, Dishwasher-Built-In, Dryer, Freezer, Microwave Hood Fan, Refrigerator, Stove-Electric, Washer, Window Coverings
Heating	Forced Air-1, Natural Gas
Fireplace	Yes
Fireplaces	Corner
Stories	2
Has Basement	Yes
Basement	Full, Finished

### Exterior

Exterior	Wood, Vinyl
Exterior Features	Back Lane, Fenced, Flat Site, Playground Nearby, Public Transportation, Schools, Shopping Nearby, See Remarks
Roof	Asphalt Shingles
Construction	Wood, Vinyl
Foundation	Concrete Perimeter

### Additional Information

Date Listed May 23rd, 2025

Days on Market 1

Zoning Zone 02

DATA IS DEEMED RELIABLE BUT IS NOT GUARANTEED ACCURATE BY THE REALTORS® ASSOCIATION OF EDMONTON. COPYRIGHT 2025 BY THE REALTORS® ASSOCIATION OF EDMONTON. ALL RIGHTS RESERVED. Trademarks are owned or controlled by the Canadian Real Estate Association (CREA) and identify real estate professionals who are members of CREA (REALTOR®, REALTORS®) and/or the quality of services they provide (MLS®, Multiple Listing Service®)

Listing information last updated on May 24th, 2025 at 4:47am MDT