

\$359,000 - 7115 12 Avenue, Edmonton

MLS® #E4438107

\$359,000

4 Bedroom, 2.00 Bathroom, 908 sqft
Single Family on 0.00 Acres

Menisa, Edmonton, AB

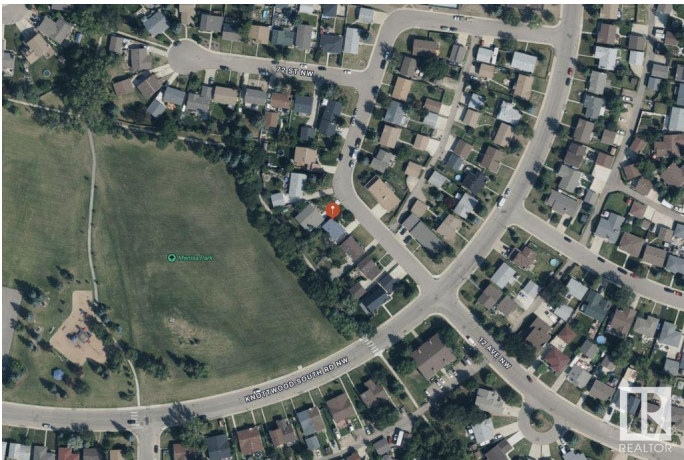
Opportunity knocks! Amazing and unbeatable location, backing onto Menisa Park. This fully finished bi-level offers the perfect chance to build sweat equity and make it your own. With 4 bedrooms and 2 full bathrooms, there's plenty of space for a growing family or investment potential. Enjoy a large backyard, front driveway, and ample parking. Nestled on a well-kept street, you're close to schools, shopping, and all major amenities. What are you waiting for?

Built in 1977

Essential Information

MLS® #	E4438107
Price	\$359,000
Bedrooms	4
Bathrooms	2.00
Full Baths	2
Square Footage	908
Acres	0.00
Year Built	1977
Type	Single Family
Sub-Type	Detached Single Family
Style	Bi-Level
Status	Active

Community Information



Address	7115 12 Avenue
Area	Edmonton
Subdivision	Menisa
City	Edmonton
County	ALBERTA
Province	AB
Postal Code	T6K 3H6

Amenities

Amenities	Off Street Parking, On Street Parking, Vinyl Windows
Parking	Front Drive Access, Parking Pad Cement/Paved, RV Parking

Interior

Appliances	See Remarks
Heating	Forced Air-1, Natural Gas
Stories	2
Has Basement	Yes
Basement	Full, Finished

Exterior

Exterior	Wood, Vinyl
Exterior Features	Backs Onto Park/Trees, Fenced, Fruit Trees/Shrubs, Golf Nearby, Landscaped, No Back Lane, Playground Nearby, Schools, Shopping Nearby
Roof	Asphalt Shingles
Construction	Wood, Vinyl
Foundation	Concrete Perimeter

Additional Information

Date Listed	May 23rd, 2025
Days on Market	10
Zoning	Zone 29

DATA IS DEEMED RELIABLE BUT IS NOT GUARANTEED ACCURATE BY THE REALTORS® ASSOCIATION OF EDMONTON. COPYRIGHT 2025 BY THE REALTORS® ASSOCIATION OF EDMONTON. ALL RIGHTS RESERVED. Trademarks are owned or controlled by the Canadian Real Estate Association (CREA) and identify real estate professionals who are members of CREA (REALTOR®, REALTORS®) and/or the quality of services they provide (MLS®, Multiple Listing Service®)

Listing information last updated on June 2nd, 2025 at 7:32am MDT