

\$450,000 - 7023 174 Avenue, Edmonton

MLS® #E4437776

\$450,000

3 Bedroom, 3.50 Bathroom, 1,630 sqft

Single Family on 0.00 Acres

Schonsee, Edmonton, AB

Check out this charming modern fully finished ½ duplex with double garage built by Sterling Homes in the family orientated community of Schonsee. With over 2000 Square Feet of living space this opportunity is perfect for a young family or young couple. Your main floor welcomes you with a generous front entry, that flows nicely to the kitchen and open concept living room. Enjoy the Gas Stove, upgraded cabinets, and quartz countertops, overlooking the living room with a gas fireplace or step out and enjoy the lovely private backyard with cozy Gazebo and composite deck, nothing spared here. Finishing off the main level is a 2 piece bathroom. The upper level has a spacious bonus area and 2nd floor laundry room. 2 large bedrooms each with their very own ensuite and walk in closets. Lastly a finished basement for added living space with 1 Bedroom, Full Bathroom, Family room and large storage room. The best part is there is NO CONDO FEES!!! Located near all amenities, school, parks.

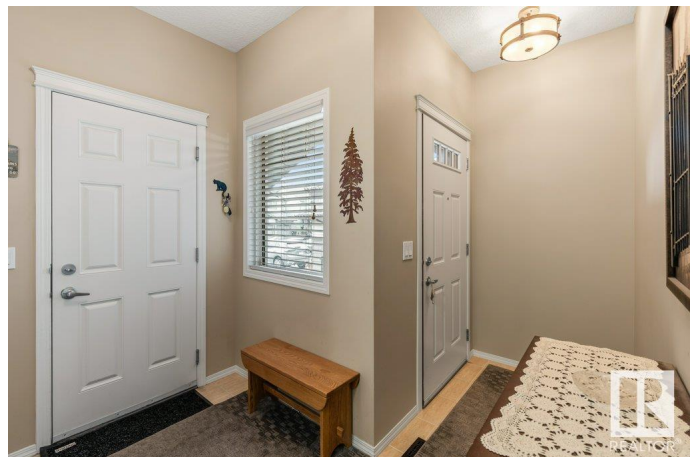
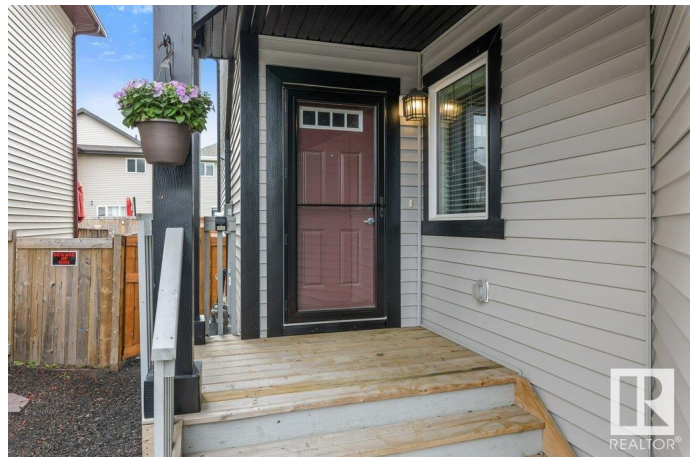
Built in 2015

Essential Information

MLS® # E4437776

Price \$450,000

Bedrooms 3



Bathrooms	3.50
Full Baths	3
Half Baths	1
Square Footage	1,630
Acres	0.00
Year Built	2015
Type	Single Family
Sub-Type	Half Duplex
Style	2 Storey
Status	Active

Community Information

Address	7023 174 Avenue
Area	Edmonton
Subdivision	Schonsee
City	Edmonton
County	ALBERTA
Province	AB
Postal Code	T5Z 0M5

Amenities

Amenities	Deck, Gazebo
Parking	Double Garage Attached

Interior

Interior Features	ensuite bathroom
Appliances	Dishwasher-Built-In, Dryer, Garage Control, Garage Opener, Microwave Hood Fan, Refrigerator, Stove-Gas, Washer, Window Coverings, See Remarks
Heating	Forced Air-1, Natural Gas
Fireplace	Yes
Fireplaces	Tile Surround
Stories	3
Has Basement	Yes
Basement	Full, Finished

Exterior

Exterior	Wood, Stone, Vinyl
Exterior Features	Fenced, Landscaped, Park/Reserve, Playground Nearby, Public

Transportation, Schools, Shopping Nearby

Roof	Asphalt Shingles
Construction	Wood, Stone, Vinyl
Foundation	Concrete Perimeter

School Information

Elementary	Northmount
Middle	Dickensfield
High	M.E.LaZerte

Additional Information

Date Listed	May 22nd, 2025
Days on Market	5
Zoning	Zone 28

DATA IS DEEMED RELIABLE BUT IS NOT GUARANTEED ACCURATE BY THE REALTORS® ASSOCIATION OF EDMONTON. COPYRIGHT 2025 BY THE REALTORS® ASSOCIATION OF EDMONTON. ALL RIGHTS RESERVED. Trademarks are owned or controlled by the Canadian Real Estate Association (CREA) and identify real estate professionals who are members of CREA (REALTOR®, REALTORS®) and/or the quality of services they provide (MLS®, Multiple Listing Service®)

Listing information last updated on May 27th, 2025 at 12:02pm MDT