

\$749,900 - 11 Ainsley Way, Sherwood Park

MLS® #E4436782

\$749,900

4 Bedroom, 3.50 Bathroom, 2,535 sqft

Single Family on 0.00 Acres

Aspen Trails, Sherwood Park, AB

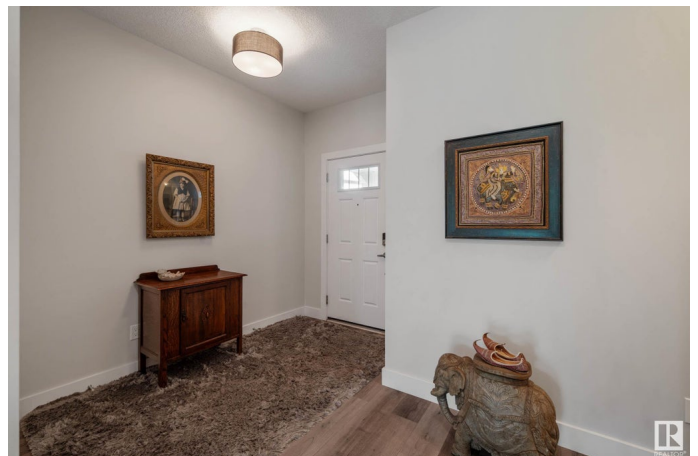
The perfect family home with space, style, and room to grow! The Lincoln by Avi Homes offers over 3300 sq ft of thoughtfully designed living space that checks every box for today's busy families. At the heart of the home is a chef-inspired kitchen featuring dual islands, quartz countertops accented with raised eating bar in a rich dark wood tone that adds warmth and contrast, 42" cabinetry, pot and pan drawers, stainless steel appliances, and a oversized counter-depth refrigerator/freezer. The open-concept main floor flows into a spacious dining area and Great Room boasting a gas fireplace and floor to ceiling patio doors & windows spanning the entire back of the home OVERLOOKING the creek and walking path. Upstairs you'll find a central bonus room, two large bedrooms with walk-in closets, laundry room, and a luxurious primary suite with freestanding tub and walk-in closet. The basement adds even more space for play, guests, or work-from-home needs. Close to parks, schools, and shopping—Welcome home!

Built in 2019

Essential Information

MLS® # E4436782

Price \$749,900



| | |
|----------------|------------------------|
| Bedrooms | 4 |
| Bathrooms | 3.50 |
| Full Baths | 3 |
| Half Baths | 1 |
| Square Footage | 2,535 |
| Acres | 0.00 |
| Year Built | 2019 |
| Type | Single Family |
| Sub-Type | Detached Single Family |
| Style | 2 Storey |
| Status | Active |

Community Information

| | |
|-------------|----------------|
| Address | 11 Ainsley Way |
| Area | Sherwood Park |
| Subdivision | Aspen Trails |
| City | Sherwood Park |
| County | ALBERTA |
| Province | AB |
| Postal Code | T8H 0V7 |

Amenities

| | |
|----------------|--|
| Amenities | Carbon Monoxide Detectors, Ceiling 9 ft., Deck, Detectors Smoke, Exterior Walls- 2"x6", No Smoking Home, Vinyl Windows |
| Parking Spaces | 2 |
| Parking | Double Garage Attached |
| Is Waterfront | Yes |

Interior

| | |
|-------------------|--|
| Interior Features | ensuite bathroom |
| Appliances | Dishwasher-Built-In, Dryer, Garage Control, Garage Opener, Hood Fan, Oven-Microwave, Refrigerator, Washer, Window Coverings, Stove-Induction |
| Heating | Forced Air-1, Natural Gas |
| Fireplace | Yes |
| Fireplaces | Mantel, Tile Surround |
| Stories | 3 |
| Has Basement | Yes |
| Basement | Full, Finished |

Exterior

| | |
|-------------------|---|
| Exterior | Wood, Vinyl, Hardie Board Siding |
| Exterior Features | Creek, Fenced, Flat Site, Landscaped, Low Maintenance Landscape, Schools, Shopping Nearby |
| Roof | Asphalt Shingles |
| Construction | Wood, Vinyl, Hardie Board Siding |
| Foundation | Concrete Perimeter |

Additional Information

| | |
|----------------|----------------|
| Date Listed | May 15th, 2025 |
| Days on Market | 4 |
| Zoning | Zone 25 |

DATA IS DEEMED RELIABLE BUT IS NOT GUARANTEED ACCURATE BY THE REALTORS® ASSOCIATION OF EDMONTON. COPYRIGHT 2025 BY THE REALTORS® ASSOCIATION OF EDMONTON. ALL RIGHTS RESERVED.Trademarks are owned or controlled by the Canadian Real Estate Association (CREA) and identify real estate professionals who are members of CREA (REALTOR®, REALTORS®) and/or the quality of services they provide (MLS®, Multiple Listing Service®)

Listing information last updated on May 19th, 2025 at 7:47am MDT