

# **\$1,750,000 - 367 52327 Range Road 233, Rural Strathcona County**

MLS® #E4435185

**\$1,750,000**

3 Bedroom, 3.50 Bathroom, 2,364 sqft

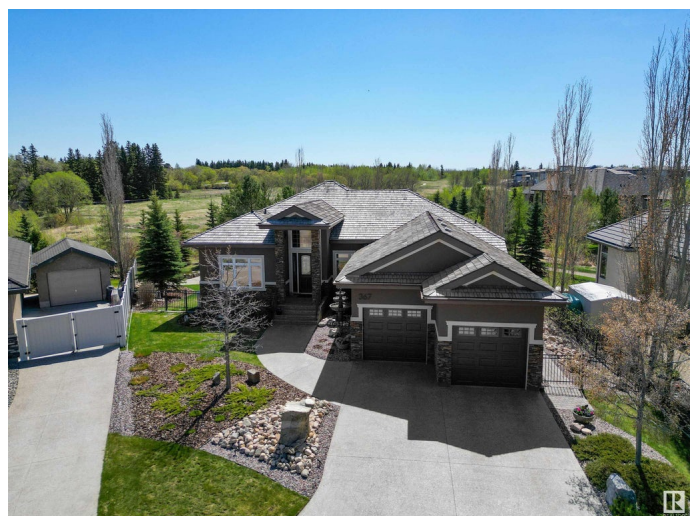
Rural on 0.31 Acres

Sherwood Golf & Country Club Estates, Rural Strathcona County, AB

Nestled on nearly 1/3 of an acre and backing onto serene treed green space, this exceptional walkout bungalow offers over 2,300 sq ft of luxurious living. From its striking curb appeal to the extensively updated interior, every detail impresses. Soaring ceilings, fresh paint, and walls of windows showcase million-dollar views. The main floor boasts custom heated porcelain tile, a gourmet island kitchen with premium appliances, butler pantry, and main-floor laundry. The spacious primary suite features plush carpet and a spa-inspired ensuite. Downstairs, enjoy engineered hardwood, a massive family room, media room, and two additional bedrooms. Smart home features include Lutron automation, Control4 security, and smart locks. The oversized heated garage with epoxy flooring could nearly fit three vehicles. Entertain on the expansive upper deck or unwind on the covered patio, surrounded by beautifully landscaped grounds. This stunning home offers luxury, comfort, and privacy in a spectacular natural setting.

Built in 2011

## **Essential Information**



MLS® #	E4435185
Price	\$1,750,000
Bedrooms	3
Bathrooms	3.50
Full Baths	3
Half Baths	1
Square Footage	2,364
Acres	0.31
Year Built	2011
Type	Rural
Sub-Type	Detached Single Family
Style	Hillside Bungalow
Status	Active

### Community Information

Address	367 52327 Range Road 233
Area	Rural Strathcona County
Subdivision	Sherwood Golf & Country Club Estates
City	Rural Strathcona County
County	ALBERTA
Province	AB
Postal Code	T8B 1C6

### Amenities

Features	Air Conditioner, Deck, Patio, Walkout Basement
Parking Spaces	6

### Interior

Interior Features	ensuite bathroom
Heating	Forced Air-1, In Floor Heat System, Natural Gas
Stories	2
Has Basement	Yes
Basement	Full, Finished

### Exterior

Exterior	Wood
Exterior Features	Backs Onto Park/Trees, Cul-De-Sac, Fenced, Landscaped, Private Setting, Treed Lot
Construction	Wood

Foundation                      Concrete Perimeter

**Additional Information**

Date Listed                      May 7th, 2025

Days on Market                57

Zoning                              Zone 80

DATA IS DEEMED RELIABLE BUT IS NOT GUARANTEED ACCURATE BY THE REALTORS® ASSOCIATION OF EDMONTON. COPYRIGHT 2025 BY THE REALTORS® ASSOCIATION OF EDMONTON. ALL RIGHTS RESERVED.Trademarks are owned or controlled by the Canadian Real Estate Association (CREA) and identify real estate professionals who are members of CREA (REALTOR®, REALTORS®) and/or the quality of services they provide (MLS®, Multiple Listing Service®)

Listing information last updated on July 3rd, 2025 at 5:32am MDT