

\$309,900 - 526 5151 Windermere Boulevard, Edmonton

MLS® #E4434979

\$309,900

2 Bedroom, 2.00 Bathroom, 769 sqft

Condo / Townhouse on 0.00 Acres

Ambleside, Edmonton, AB

Welcome to Signature at Ambleside! This spacious and stylish 2 bedroom, 2 bathroom condo offers an ideal layout for comfort and convenience. Step inside to a welcoming dining area that seamlessly connects to the modern kitchen, featuring stainless steel appliances, plenty of cabinetry, and a functional layout for everyday living. The bright and airy living room is filled with natural light and opens onto a private balcony with beautiful, unobstructed viewsâ€”perfect for relaxing or entertaining. The primary bedroom includes a walk-through closet that leads to a private 3-piece ensuite. On the opposite side of the unit, you'll find a generously sized second bedroom with large windows and access to a full 4-piece bathroom. Additional highlights include in-suite laundry and storage room, and a titled heated underground parking stall. Located in a desirable building with excellent amenities, and close to shopping, restaurants, and public transitâ€”this condo checks all the boxes!

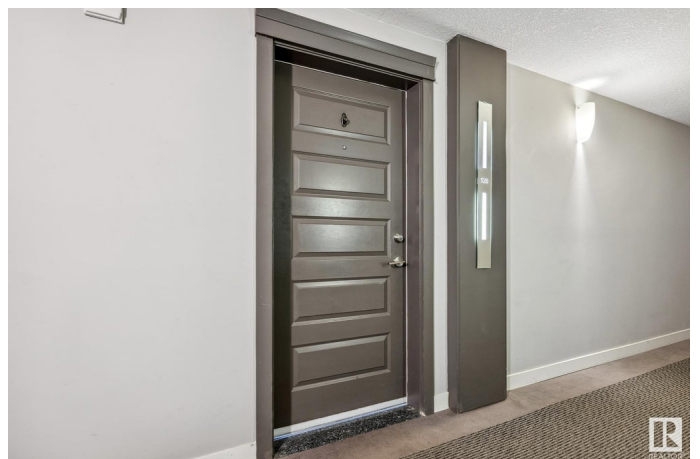
Built in 2014

Essential Information

MLS® # E4434979

Price \$309,900

Bedrooms 2



Bathrooms	2.00
Full Baths	2
Square Footage	769
Acres	0.00
Year Built	2014
Type	Condo / Townhouse
Sub-Type	Apartment High Rise
Style	Single Level Apartment
Status	Active

Community Information

Address	526 5151 Windermere Boulevard
Area	Edmonton
Subdivision	Ambleside
City	Edmonton
County	ALBERTA
Province	AB
Postal Code	T6W 2K4

Amenities

Amenities	Off Street Parking, Exercise Room, Parking-Visitor, Secured Parking, Security Door, Storage-In-Suite
Parking	Heated, Underground

Interior

Interior Features	ensuite bathroom
Appliances	Dishwasher-Built-In, Dryer, Microwave Hood Fan, Refrigerator, Stove-Electric, Washer, Window Coverings
Heating	Heat Pump, Natural Gas
# of Stories	12
Stories	1
Has Basement	Yes
Basement	None, No Basement

Exterior

Exterior	Concrete, Stucco
Exterior Features	Airport Nearby, Golf Nearby, Playground Nearby, Public Transportation, Schools, Shopping Nearby
Roof	EPDM Membrane

Construction	Concrete, Stucco
Foundation	Concrete Perimeter

Additional Information

Date Listed	May 7th, 2025
Days on Market	4
Zoning	Zone 56
HOA Fees	100
HOA Fees Freq.	Annually
Condo Fee	\$510

DATA IS DEEMED RELIABLE BUT IS NOT GUARANTEED ACCURATE BY THE REALTORS® ASSOCIATION OF EDMONTON. COPYRIGHT 2025 BY THE REALTORS® ASSOCIATION OF EDMONTON. ALL RIGHTS RESERVED.Trademarks are owned or controlled by the Canadian Real Estate Association (CREA) and identify real estate professionals who are members of CREA (REALTOR®, REALTORS®) and/or the quality of services they provide (MLS®, Multiple Listing Service®)

Listing information last updated on May 10th, 2025 at 10:17pm MDT