

\$719,900 - 19 Edwin Crescent, St. Albert

MLS® #E4434061

\$719,900

5 Bedroom, 3.50 Bathroom, 2,657 sqft

Single Family on 0.00 Acres

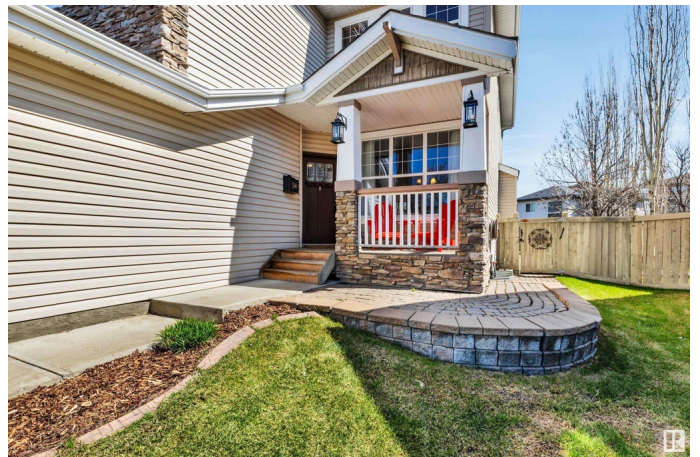
Erin Ridge, St. Albert, AB

Fantastic location for this 2656 sq. ft. 2 storey located on a large pie lot in a quiet Erin Ridge cul-de-sac! Great space for the growing family. The main floor features 9' ceilings, a huge maple kitchen with newer stainless steel appliances, large center island and corner pantry. A spacious dining nook with big windows let the sun pour in! A living room with gas fireplace, dining room and den with beautiful built-ins complete the main floor. There are 4 bedrooms upstairs including a massive primary with large windows, updated 5 piece ensuite with jetted tub and shower and walk-in closet. A bonus/family room provides great space for the family. The basement is finished with a 5th bedroom, 4 piece bath and large rec room plus storage space. Enjoy the large, east facing backyard this summer! Recent upgrades incl. shingles (2020), Furnace (2023), HWT (2025) and central A/C (2022).

Built in 2003

Essential Information

| | |
|------------|-----------|
| MLS® # | E4434061 |
| Price | \$719,900 |
| Bedrooms | 5 |
| Bathrooms | 3.50 |
| Full Baths | 3 |



| | |
|----------------|------------------------|
| Half Baths | 1 |
| Square Footage | 2,657 |
| Acres | 0.00 |
| Year Built | 2003 |
| Type | Single Family |
| Sub-Type | Detached Single Family |
| Style | 2 Storey |
| Status | Active |

Community Information

| | |
|-------------|-------------------|
| Address | 19 Edwin Crescent |
| Area | St. Albert |
| Subdivision | Erin Ridge |
| City | St. Albert |
| County | ALBERTA |
| Province | AB |
| Postal Code | T8N 7G9 |

Amenities

| | |
|-----------|--------------------------------------------------------------|
| Amenities | Air Conditioner, Deck, No Smoking Home, Patio, Vinyl Windows |
| Parking | Double Garage Attached |

Interior

| | |
|-------------------|----------------------------------------------------------------------------------------------------------------------------------------------------------------------------------------------------------|
| Interior Features | ensuite bathroom |
| Appliances | Air Conditioning-Central, Alarm/Security System, Dryer, Microwave Hood Fan, Refrigerator, Storage Shed, Stove-Electric, Vacuum System Attachments, Vacuum Systems, Washer, Window Coverings, See Remarks |
| Heating | Forced Air-1, Natural Gas |
| Fireplace | Yes |
| Fireplaces | Mantel |
| Stories | 3 |
| Has Basement | Yes |
| Basement | Full, Finished |

Exterior

| | |
|-------------------|-------------------------------------------------------------------------------------------------------------------------------|
| Exterior | Wood, Stone, Vinyl |
| Exterior Features | Cul-De-Sac, Fenced, Golf Nearby, Landscaped, No Back Lane, Playground Nearby, Public Transportation, Schools, Shopping Nearby |

| | |
|--------------|--------------------|
| Roof | Asphalt Shingles |
| Construction | Wood, Stone, Vinyl |
| Foundation | Concrete Perimeter |

Additional Information

| | |
|----------------|---------------|
| Date Listed | May 2nd, 2025 |
| Days on Market | 7 |
| Zoning | Zone 24 |

DATA IS DEEMED RELIABLE BUT IS NOT GUARANTEED ACCURATE BY THE REALTORS® ASSOCIATION OF EDMONTON. COPYRIGHT 2025 BY THE REALTORS® ASSOCIATION OF EDMONTON. ALL RIGHTS RESERVED.Trademarks are owned or controlled by the Canadian Real Estate Association (CREA) and identify real estate professionals who are members of CREA (REALTOR®, REALTORS®) and/or the quality of services they provide (MLS®, Multiple Listing Service®)

Listing information last updated on May 9th, 2025 at 4:17am MDT