

\$412,000 - 128 21 Summerwood Drive, Sherwood Park

MLS® #E4433103

\$412,000

3 Bedroom, 2.50 Bathroom, 1,448 sqft

Condo / Townhouse on 0.00 Acres

Summerwood, Sherwood Park, AB

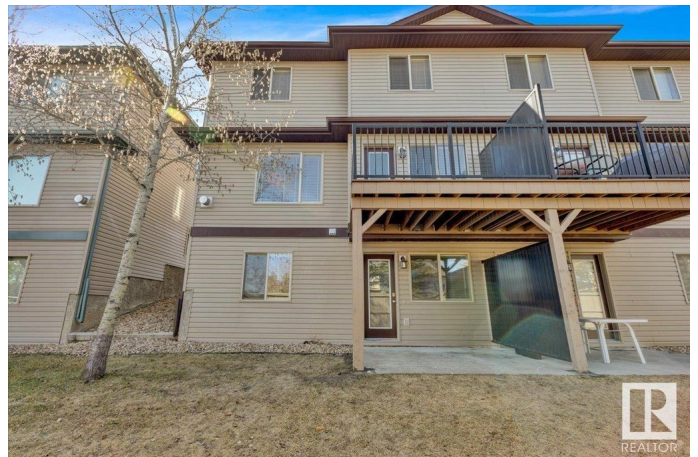
Welcome Home! Nestled in the Summerwood, meticulously maintained walkout basement condo duplex with double attached garage. Comfort, convenience, and style. With thoughtful updates March 2025 and a spacious layout, it's an ideal MUST-SEE choice for families and professionals. Itâ€™s a 3 bedroom, 2.5 bath home with a bonus/flex space on the upper floor. The main floor leads to a bright open living room with large windows and a corner gas fireplace looking into your nook and kitchen with large peninsula plus a half bath. Loads of cupboards and a large corner pantry awaits you before you pass through into the attached garage. Upper floor has a den/bonus space that can be used as a study or office. The primary bedroom has its own 4-piece ensuite bath, there are two additional bedrooms and full bathroom. Ample visitor parking. March 2025: Entire residence professionally PAINTED including basement and garage floors; NEW VINYL flooring throughout; NEW baseboards, window coverings, garburator, and newer dishwasher.

Built in 2007

Essential Information

MLS® # E4433103

Price \$412,000



Bedrooms	3
Bathrooms	2.50
Full Baths	2
Half Baths	1
Square Footage	1,448
Acres	0.00
Year Built	2007
Type	Condo / Townhouse
Sub-Type	Half Duplex
Style	2 Storey
Status	Active

Community Information

Address	128 21 Summerwood Drive
Area	Sherwood Park
Subdivision	Summerwood
City	Sherwood Park
County	ALBERTA
Province	AB
Postal Code	T8H 0C5

Amenities

Amenities	Deck, Hot Water Natural Gas, Parking-Visitor, Walkout Basement, See Remarks
Parking	Double Garage Attached

Interior

Interior Features	ensuite bathroom
Appliances	Dishwasher-Built-In, Dryer, Garage Opener, Microwave Hood Fan, Oven-Built-In, Refrigerator, Stove-Electric, Washer, Window Coverings
Heating	Forced Air-1, Natural Gas
Fireplace	Yes
Fireplaces	Glass Door
Stories	2
Has Basement	Yes
Basement	Full, Unfinished

Exterior

Exterior	Wood, Vinyl
----------	-------------

Exterior Features	Backs Onto Park/Trees, Landscaped, Low Maintenance Landscape, No Back Lane, Playground Nearby, Schools, Shopping Nearby, See Remarks
Roof	Asphalt Shingles
Construction	Wood, Vinyl
Foundation	Concrete Perimeter

Additional Information

Date Listed	April 27th, 2025
Days on Market	24
Zoning	Zone 25
Condo Fee	\$360

DATA IS DEEMED RELIABLE BUT IS NOT GUARANTEED ACCURATE BY THE REALTORS® ASSOCIATION OF EDMONTON. COPYRIGHT 2025 BY THE REALTORS® ASSOCIATION OF EDMONTON. ALL RIGHTS RESERVED. Trademarks are owned or controlled by the Canadian Real Estate Association (CREA) and identify real estate professionals who are members of CREA (REALTOR®, REALTORS®) and/or the quality of services they provide (MLS®, Multiple Listing Service®)

Listing information last updated on May 21st, 2025 at 7:47am MDT