

## \$940,000 - 55020 Rr 260, Rural Sturgeon County

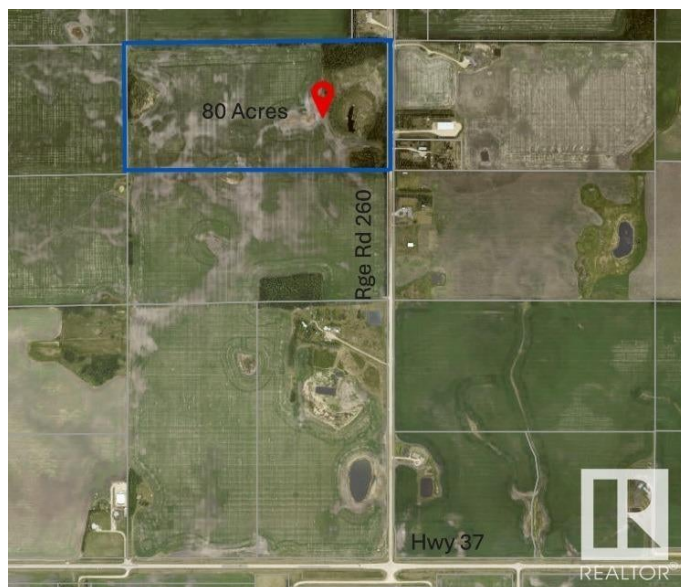
MLS® #E4430959

**\$940,000**

0 Bedroom, 0.00 Bathroom,  
Rural on 80.00 Acres

None, Rural Sturgeon County, AB

Here's your chance to own a full 80 acres of pristine land—perfect for creating your own rural retreat or expanding your existing holdings. With subdivision potential still available, this property offers the flexibility to build a cozy acreage, a rancher-style forever home, or a private estate surrounded by open skies and natural beauty. Located less than 10 minutes from both St. Albert and Morinville, and under 20 minutes to Edmonton, it's the ideal blend of peace and convenience. Plus, with only 1.5 km of gravel road off Hwy 37, access is easy and travel is a breeze. This is where tranquility meets opportunity.



### Essential Information

MLS® #	E4430959
Price	\$940,000
Bathrooms	0.00
Acres	80.00
Type	Rural
Sub-Type	Vacant Lot/Land
Status	Active

### Community Information

Address	55020 Rr 260
Area	Rural Sturgeon County
Subdivision	None

City	Rural Sturgeon County
County	ALBERTA
Province	AB
Postal Code	T8T 0W5

### Exterior

Exterior Features    See Remarks

### Additional Information

Date Listed	April 15th, 2025
Days on Market	82
Zoning	Zone 60

DATA IS DEEMED RELIABLE BUT IS NOT GUARANTEED ACCURATE BY THE REALTORS® ASSOCIATION OF EDMONTON. COPYRIGHT 2025 BY THE REALTORS® ASSOCIATION OF EDMONTON. ALL RIGHTS RESERVED. Trademarks are owned or controlled by the Canadian Real Estate Association (CREA) and identify real estate professionals who are members of CREA (REALTOR®, REALTORS®) and/or the quality of services they provide (MLS®, Multiple Listing Service®)

Listing information last updated on July 6th, 2025 at 9:31am MDT