

# \$536,500 - 9833 68 Avenue, Edmonton

MLS® #E4429279

## \$536,500

5 Bedroom, 2.00 Bathroom, 1,206 sqft  
Single Family on 0.00 Acres

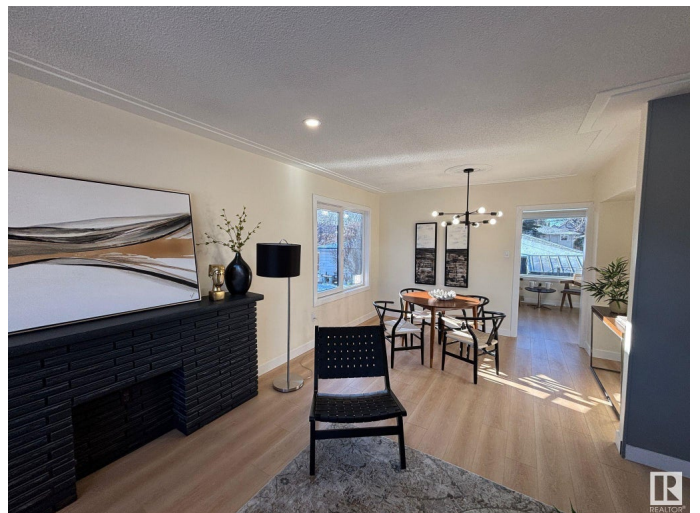
Hazeldean, Edmonton, AB

STEPS FROM MILL CREEK RAVINE and HAPPY BEER STREET—your new lifestyle starts HERE. Hike, bike, or stroll the RAVINE TRAILS, grab a pint at local breweries, or sip a latte at one of the nearby caf s. Hazeldean is a hidden gem with a strong COMMUNITY LEAGUE, parks, playgrounds, and quick access to Whyte Ave. This RENOVATED 5-BED, 2-BATH home has a SEPARATE ENTRANCE to a bright in-law suite. Inside: OPEN-CONCEPT layout, custom cabinets, QUARTZ, pot lights, and new German tilt & turn windows. Massive primary, DOUBLE GARAGE, fenced yard, and upgraded landscaping. Live where the good vibes are.

Built in 1956

### Essential Information

MLS® #	E4429279
Price	\$536,500
Bedrooms	5
Bathrooms	2.00
Full Baths	2
Square Footage	1,206
Acres	0.00
Year Built	1956
Type	Single Family
Sub-Type	Detached Single Family



Style Raised Bungalow  
Status Active

### Community Information

Address 9833 68 Avenue  
Area Edmonton  
Subdivision Hazeldean  
City Edmonton  
County ALBERTA  
Province AB  
Postal Code T6E 0R4

### Amenities

Amenities See Remarks  
Parking Spaces 4  
Parking Double Garage Detached

### Interior

Appliances Dryer, Garage Opener, Hood Fan, Washer, Refrigerators-Two, Stoves-Two  
Heating Forced Air-1, Natural Gas  
Stories 2  
Has Suite Yes  
Has Basement Yes  
Basement Full, Finished

### Exterior

Exterior Wood, Stucco  
Exterior Features Back Lane, Fenced, Playground Nearby, Schools, Shopping Nearby, See Remarks  
Roof Asphalt Shingles  
Construction Wood, Stucco  
Foundation Concrete Perimeter

### Additional Information

Date Listed April 5th, 2025  
Days on Market 19  
Zoning Zone 17

RESERVED. Trademarks are owned or controlled by the Canadian Real Estate Association (CREA) and identify real estate professionals who are members of CREA (REALTOR®®, REALTORS®®) and/or the quality of services they provide (MLS®®, Multiple Listing Service®®)

Listing information last updated on April 24th, 2025 at 2:47pm MDT