

\$659,900 - 22 Harley Way, Spruce Grove

MLS® #E4428264

\$659,900

4 Bedroom, 3.50 Bathroom, 2,044 sqft

Single Family on 0.00 Acres

Hilldowns, Spruce Grove, AB

This stunning Sun Rufo built home is backing GREENSPACE & walking trails in Hilldowns, close to many amenities, including new Civic Centre with hockey arenas, walking distance to a number of schools & quick access to main commutes. This home is just under 3000sqft of living space with 4 bedrooms-all on the upper level & fully finished WALKOUT basement, perfect for entertaining, with massive rec room with wet bar, 3 pc bathroom, storage room & large patio doors to concrete patio! Oversized 26x22 heated double garage (with drains) can fit a truck. Oversized windows let in plenty of natural light, open concept with 9ft ceilings, large kitchen with massive island, quartz countertops, open to the living room & dining with patio doors that open to the maintenance free deck overlooking greenspace. Upper level has laundry room, generous sized primary bedroom with 5pce ensuite including separate shower & jacuzzi tub with TV. Many upgrades added to this home including A/C & built in speaker system with 6 zones.

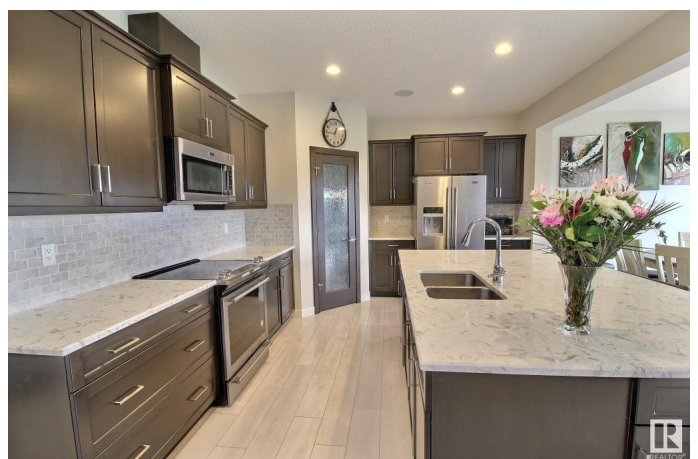
Built in 2017

Essential Information

MLS® # E4428264

Price \$659,900

Bedrooms 4



Bathrooms	3.50
Full Baths	3
Half Baths	1
Square Footage	2,044
Acres	0.00
Year Built	2017
Type	Single Family
Sub-Type	Detached Single Family
Style	2 Storey
Status	Active

Community Information

Address	22 Harley Way
Area	Spruce Grove
Subdivision	Hilldowns
City	Spruce Grove
County	ALBERTA
Province	AB
Postal Code	T7X 0X4

Amenities

Amenities	Air Conditioner, Ceiling 9 ft., Deck, Exterior Walls- 2"x6", Vinyl Windows, Walkout Basement
Parking	Double Garage Attached, Heated, Over Sized

Interior

Interior Features	ensuite bathroom
Appliances	Air Conditioning-Central, Dishwasher-Built-In, Dryer, Garage Control, Garage Opener, Microwave Hood Fan, Refrigerator, Stove-Electric, Washer
Heating	Forced Air-1, Natural Gas
Fireplaces	Glass Door
Stories	3
Has Basement	Yes
Basement	Full, Finished

Exterior

Exterior	Wood, Vinyl
Exterior Features	No Back Lane, Park/Reserve, Playground Nearby, Public

	Transportation, Schools, Shopping Nearby
Roof	Asphalt Shingles
Construction	Wood, Vinyl
Foundation	Concrete Perimeter

School Information

Elementary	Brookwood
Middle	Woodhaven
High	Spruce Grove Comp

Additional Information

Date Listed	March 31st, 2025
Days on Market	50
Zoning	Zone 91

DATA IS DEEMED RELIABLE BUT IS NOT GUARANTEED ACCURATE BY THE REALTORS® ASSOCIATION OF EDMONTON. COPYRIGHT 2025 BY THE REALTORS® ASSOCIATION OF EDMONTON. ALL RIGHTS RESERVED. Trademarks are owned or controlled by the Canadian Real Estate Association (CREA) and identify real estate professionals who are members of CREA (REALTOR®, REALTORS®) and/or the quality of services they provide (MLS®, Multiple Listing Service®)

Listing information last updated on May 20th, 2025 at 9:02am MDT