

# \$699,900 - 13 Hull Wynd, Spruce Grove

MLS® #E4426147

**\$699,900**

5 Bedroom, 3.00 Bathroom, 2,396 sqft  
Single Family on 0.00 Acres

Hilldowns, Spruce Grove, AB

Built by SUNNYVIEW Homes, this 2 Storey home is FULLY loaded with upgrades. 5 BEDROOM home with 3 FULL bathrooms. The main floor boasts a good sized bedroom and full bathroom. Open to below family room with big windows and a beautiful FEATURE wall complete with an electric fireplace. CUSTOM kitchen with waterfall quartz countertop and bar space over looking the good sized nook area. A separate chefs kitchen with plenty of storage space tops off the main floor. The glass railing and step lights lead to the second floor BONUS room. The primary suite features a walk-in closet and a spa-like 5-piece ensuite. 3 additional rooms, one full bathroom, laundry room complete this floor. Premium lighting package, custom showers, MDF shelving, three gas lines, feature walls, two-tone cabinets and coffered ceilings. Basement offers a separate side entrance awaiting your personal touch making it a great income potential. \*Pictures are from another home built by same builder, posted for reference purposes.

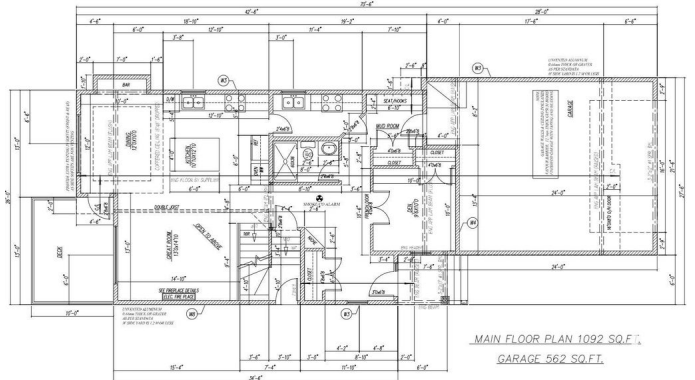
Built in 2024

## Essential Information

MLS® # E4426147  
Price \$699,900



FRONT ELEVATION



MAIN FLOOR PLAN 1092 SQ.FT.  
GARAGE 562 SQ.FT.

Bedrooms	5
Bathrooms	3.00
Full Baths	3
Square Footage	2,396
Acres	0.00
Year Built	2024
Type	Single Family
Sub-Type	Detached Single Family
Style	2 Storey
Status	Active

### **Community Information**

Address	13 Hull Wynd
Area	Spruce Grove
Subdivision	Hilldowns
City	Spruce Grove
County	ALBERTA
Province	AB
Postal Code	T7X 0X5

### **Amenities**

Amenities	On Street Parking, Ceiling 10 ft., Ceiling 9 ft., Deck, Parking-Extra, Parking-Visitor
Parking Spaces	4
Parking	Double Garage Attached, Front Drive Access

### **Interior**

Interior Features	ensuite bathroom
Appliances	Garage Control, Garage Opener, Hood Fan
Heating	Forced Air-1, Natural Gas
Stories	2
Has Basement	Yes
Basement	Full, Unfinished

### **Exterior**

Exterior	Wood, Vinyl
Exterior Features	Airport Nearby, Golf Nearby, Picnic Area, Playground Nearby, Private Setting, Public Transportation, Schools, Shopping Nearby
Roof	Asphalt Shingles

Construction Wood, Vinyl  
Foundation Concrete Perimeter

### **Additional Information**

Date Listed March 17th, 2025  
Days on Market 23  
Zoning Zone 91

DATA IS DEEMED RELIABLE BUT IS NOT GUARANTEED ACCURATE BY THE REALTORS® ASSOCIATION OF EDMONTON. COPYRIGHT 2025 BY THE REALTORS® ASSOCIATION OF EDMONTON. ALL RIGHTS RESERVED. Trademarks are owned or controlled by the Canadian Real Estate Association (CREA) and identify real estate professionals who are members of CREA (REALTOR®, REALTORS®) and/or the quality of services they provide (MLS®, Multiple Listing Service®)

Listing information last updated on April 9th, 2025 at 6:02pm MDT