

# **\$199,900 - 21 53207 Hghway 31, Rural Parkland County**

MLS® #E4424486

**\$199,900**

1 Bedroom, 1.00 Bathroom, 542 sqft

Rural on 0.09 Acres

The Meadows (Parkland), Rural Parkland County, AB

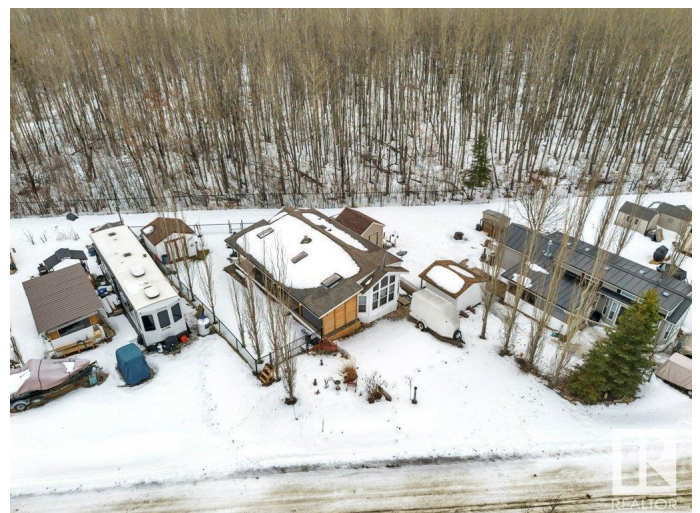
Your Dream Getaway Awaits!! Now's your chance to own a stunning, fully serviced 4-season park model in the gated community of The Meadows at Pineridge Golf Resort, just 45 minutes west of Edmonton and 2 minutes north of Seba Beach! This 1 bed & 1 bath 542 sq ft home boasts many features such as being fully fenced for privacy, municipal water, A/C, an electric fireplace and fully covered deck to enjoy those hot summer nights. PLUS amazing resort amenities including a rec center w/ gym & shower room, big screen TV, air hockey, ping pong, 12 hole golf course, tennis & pickleball courts, basketball, horseshoe pits, playgrounds and walking trails all just steps from your front door. This property offers a rare combination of comfort, recreation, and nature. With low taxes and affordable condo fees (bare land condo), youâ€™™ll be living the dream without the stress. Donâ€™™t miss out on this incredible opportunity to own your very own slice of paradise. Beat the rush and make this beautiful retreat your own!

Built in 2012

## **Essential Information**

MLS® # E4424486

Price \$199,900



Bedrooms	1
Bathrooms	1.00
Full Baths	1
Square Footage	542
Acres	0.09
Year Built	2012
Type	Rural
Sub-Type	Detached Condominium
Style	Bungalow
Status	Active

### Community Information

Address	21 53207 Hghway 31
Area	Rural Parkland County
Subdivision	The Meadows (Parkland)
City	Rural Parkland County
County	ALBERTA
Province	AB
Postal Code	T0E 2B0

### Amenities

Features	Ceiling 9 ft., Deck, Fire Pit, No Smoking Home, Party Room, Racquet Courts, Vaulted Ceiling, Vinyl Windows
----------	--

### Interior

Heating	Forced Air-1, Natural Gas
Stories	1
Has Basement	Yes
Basement	None, No Basement

### Exterior

Exterior	Wood
Exterior Features	Backs Onto Park/Trees, Fenced, Golf Nearby, Landscaped, No Back Lane, No Through Road, Picnic Area, Playground Nearby
Construction	Wood
Foundation	Piling

### Additional Information

Date Listed	March 7th, 2025
-------------	-----------------

Days on Market	57
Zoning	Zone 90
Condo Fee	\$163

DATA IS DEEMED RELIABLE BUT IS NOT GUARANTEED ACCURATE BY THE REALTORS® ASSOCIATION OF EDMONTON. COPYRIGHT 2025 BY THE REALTORS® ASSOCIATION OF EDMONTON. ALL RIGHTS RESERVED. Trademarks are owned or controlled by the Canadian Real Estate Association (CREA) and identify real estate professionals who are members of CREA (REALTOR®, REALTORS®) and/or the quality of services they provide (MLS®, Multiple Listing Service®)

Listing information last updated on May 3rd, 2025 at 8:32pm MDT