

\$379,900 - 45 6905 25 Avenue, Edmonton

MLS® #E4424216

\$379,900

3 Bedroom, 2.50 Bathroom, 1,274 sqft
Condo / Townhouse on 0.00 Acres

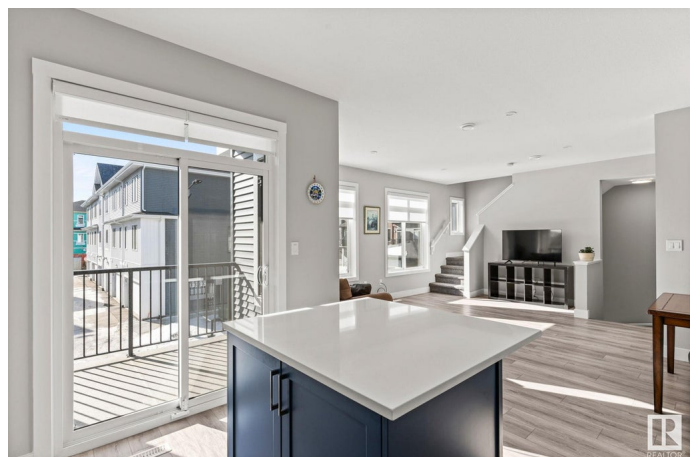
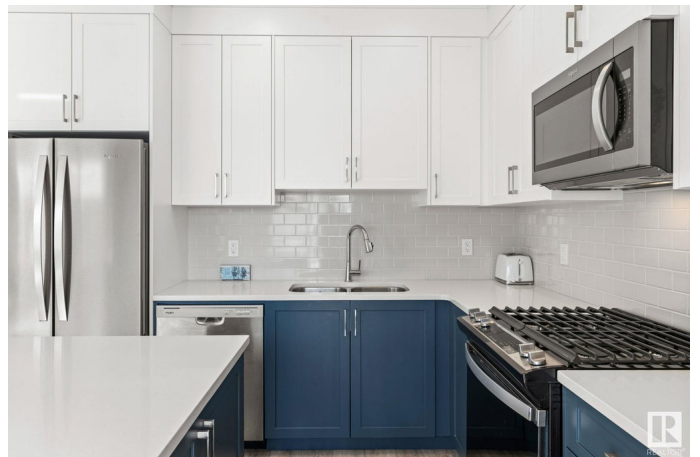
The Orchards At Ellerslie, Edmonton, AB

Welcome to The Orchards, one of Edmonton's most popular SE communities! This nearly new 3-bed, 2.5-bath townhouse offers almost 1300 sq. f.t of thoughtfully designed living space and a maintenance-free lifestyle with no shoveling or yard work. It also includes a double car garage for added convenience. The bright, open-concept layout features 9-foot ceilings, large windows, and modern finishes. The stylish kitchen, complete with stainless steel appliances and a gas stove, opens onto a private balcony with a gas line, perfect for BBQs and entertaining. Upstairs, the spacious primary suite includes a walk-in closet, private ensuite, and a second balcony for your own private outdoor space. Two additional bedrooms, a full bathroom, and convenient upstairs laundry complete the space. With schools, parks, walking trails, shopping, and quick access to Anthony Henday Drive nearby, this home is perfect for young families and first-time buyers.

Built in 2024

Essential Information

MLS® #	E4424216
Price	\$379,900
Bedrooms	3



Bathrooms	2.50
Full Baths	2
Half Baths	1
Square Footage	1,274
Acres	0.00
Year Built	2024
Type	Condo / Townhouse
Sub-Type	Townhouse
Style	3 Storey
Status	Active

Community Information

Address	45 6905 25 Avenue
Area	Edmonton
Subdivision	The Orchards At Ellerslie
City	Edmonton
County	ALBERTA
Province	AB
Postal Code	T6X 1A1

Amenities

Amenities	On Street Parking, Ceiling 9 ft., Parking-Extra, Parking-Visitor, See Remarks, Natural Gas BBQ Hookup
Parking Spaces	2
Parking	Double Garage Attached

Interior

Interior Features	ensuite bathroom
Appliances	Dishwasher-Built-In, Dryer, Microwave Hood Fan, Refrigerator, Stove-Gas, Washer, Window Coverings
Heating	Forced Air-1, Natural Gas
Stories	2
Has Basement	Yes
Basement	None, No Basement

Exterior

Exterior	Wood, Vinyl
Exterior Features	Airport Nearby, No Back Lane, Schools, Shopping Nearby, Ski Hill Nearby

Roof	Asphalt Shingles
Construction	Wood, Vinyl
Foundation	Concrete Perimeter

Additional Information

Date Listed	March 6th, 2025
Days on Market	7
Zoning	Zone 53
HOA Fees	450
HOA Fees Freq.	Annually
Condo Fee	\$262

DATA IS DEEMED RELIABLE BUT IS NOT GUARANTEED ACCURATE BY THE REALTORS® ASSOCIATION OF EDMONTON. COPYRIGHT 2025 BY THE REALTORS® ASSOCIATION OF EDMONTON. ALL RIGHTS RESERVED. Trademarks are owned or controlled by the Canadian Real Estate Association (CREA) and identify real estate professionals who are members of CREA (REALTOR®, REALTORS®) and/or the quality of services they provide (MLS®, Multiple Listing Service®)

Listing information last updated on March 13th, 2025 at 10:02am MDT