

\$899,900 - 2012 18 Avenue, Edmonton

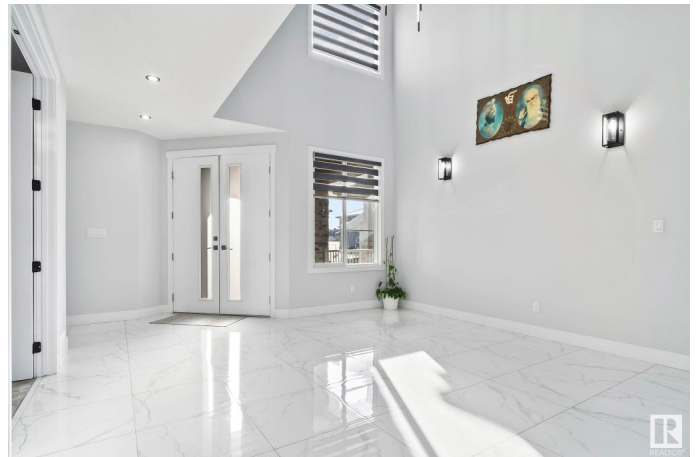
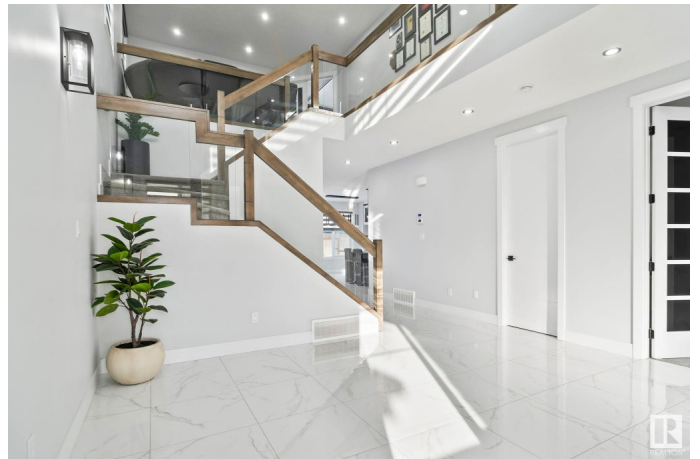
MLS® #E4420761

\$899,900

5 Bedroom, 5.00 Bathroom, 2,876 sqft
Single Family on 0.00 Acres

Laurel, Edmonton, AB

Welcome to this stunning, luxurious built home, a masterpiece of modern design & custom finishes. Featuring an open-to-above entrance, glass railings adding elegance. This 5+1 bedroom, 5-bath home offers an exceptional living experience. The layout includes 3 ensuite bathrooms, ensuring comfort and privacy. The main floor showcases a bedroom and full bath, ideal for guests or multi-generational living. Ceramic tile flooring flows seamlessly throughout, while the chef-inspired kitchen boasts upgraded appliances, a large island with extended cabinets & a separate spice kitchen. The family room features a stunning wall & electric fireplace. Upstairs, two opulent owner suites, each with private ensuites, offer a retreat-like experience. The bonus room provides extra space for relaxation. A finished basement includes an additional bedroom, making it perfect for larger families or guests. This exceptional home combines luxury, comfort & functionality, making this home perfect for creating lasting memories.



Built in 2021

Essential Information

MLS® # E4420761

Price \$899,900

Bedrooms	5
Bathrooms	5.00
Full Baths	5
Square Footage	2,876
Acres	0.00
Year Built	2021
Type	Single Family
Sub-Type	Detached Single Family
Style	2 Storey
Status	Active

Community Information

Address	2012 18 Avenue
Area	Edmonton
Subdivision	Laurel
City	Edmonton
County	ALBERTA
Province	AB
Postal Code	T6T 2M8

Amenities

Amenities	Ceiling 9 ft., No Animal Home
Parking	Double Garage Attached

Interior

Interior Features	ensuite bathroom
Appliances	Dishwasher-Built-In, Dryer, Fan-Ceiling, Garage Control, Garage Opener, Hood Fan, Oven-Built-In, Refrigerator, Stove-Gas, Washer, Window Coverings, Stove-Induction
Heating	Forced Air-1, Natural Gas
Stories	3
Has Basement	Yes
Basement	Full, Finished

Exterior

Exterior	Wood, Stone, Vinyl, Hardie Board Siding
Exterior Features	Fenced, Landscaped, Playground Nearby, Schools, Shopping Nearby
Roof	Asphalt Shingles
Construction	Wood, Stone, Vinyl, Hardie Board Siding

Foundation Concrete Perimeter

Additional Information

Date Listed February 7th, 2025

Days on Market 61

Zoning Zone 30

DATA IS DEEMED RELIABLE BUT IS NOT GUARANTEED ACCURATE BY THE REALTORS® ASSOCIATION OF EDMONTON. COPYRIGHT 2025 BY THE REALTORS® ASSOCIATION OF EDMONTON. ALL RIGHTS RESERVED. Trademarks are owned or controlled by the Canadian Real Estate Association (CREA) and identify real estate professionals who are members of CREA (REALTOR®, REALTORS®) and/or the quality of services they provide (MLS®, Multiple Listing Service®)

Listing information last updated on April 9th, 2025 at 3:32am MDT