

Courtesy Of John Rota Of Sweetly

\$675,000 - 24 Harley Way, Spruce Grove

MLS® #E4412236

\$675,000

4 Bedroom, 2.50 Bathroom, 2,283 sqft

Single Family on 0.00 Acres

Hilldowns, Spruce Grove, AB

Welcome to this stunning brand-new two-story home, nestled on a serene cul-de-sac in a welcoming, family-friendly community.

Designed with both comfort and style in mind, this home boasts a bright and open main floor featuring a modern chef's kitchen, spacious dining area, and a sunlit living room perfect for gatherings. An additional den/office space and a convenient 2-piece bathroom complete this versatile main level. Upstairs, you

will find three generously sized bedrooms, plus a luxurious primary suite with a spa-like 5-piece ensuite, as well as a 4-piece bathroom and a large, open-concept bonus room that creates an airy, connected feel. For added convenience, this home also includes a triple attached garage, providing plenty of space for vehicles and storage. Ideal for families or those looking for a peaceful community with modern comforts, this home won't last long! *Photos are the artist rendering for representation only*

Upstairs, you will find three generously sized bedrooms, plus a luxurious primary suite with a spa-like 5-piece ensuite, as well as a 4-piece bathroom and a large, open-concept bonus room that creates an airy, connected feel. For added convenience, this home also includes a triple attached garage, providing plenty of space for vehicles and storage. Ideal for families or those looking for a peaceful community with modern comforts, this home won't last long! *Photos are the artist rendering for representation only*

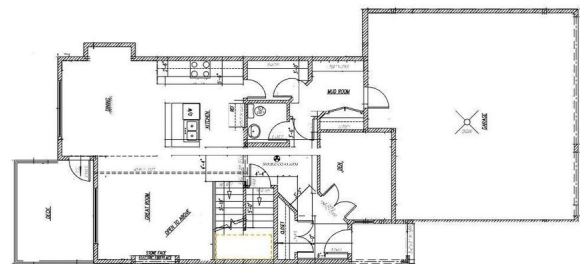
Built in 2024

Essential Information

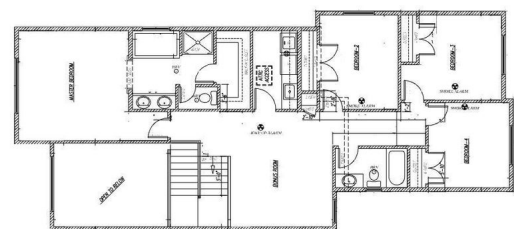
| | |
|-----------|-----------|
| MLS® # | E4412236 |
| Price | \$675,000 |
| Bedrooms | 4 |
| Bathrooms | 2.50 |



FRONT ELEVATION



MAIN FLOOR PLAN 1002 SQ FT
GARAGE 690 SQ.FT.



UPPER FLOOR PLAN 1281 SQ.FT.

| | |
|----------------|------------------------|
| Full Baths | 2 |
| Half Baths | 1 |
| Square Footage | 2,283 |
| Acres | 0.00 |
| Year Built | 2024 |
| Type | Single Family |
| Sub-Type | Detached Single Family |
| Style | 2 Storey |
| Status | Active |

Community Information

| | |
|-------------|---------------|
| Address | 24 Harley Way |
| Area | Spruce Grove |
| Subdivision | Hilldowns |
| City | Spruce Grove |
| County | ALBERTA |
| Province | AB |
| Postal Code | T7X 0X4 |

Amenities

| | |
|-----------|--|
| Amenities | Detectors Smoke, No Animal Home, No Smoking Home |
| Parking | Triple Garage Attached |

Interior

| | |
|-------------------|---------------------------|
| Interior Features | ensuite bathroom |
| Appliances | See Remarks |
| Heating | Forced Air-1, Natural Gas |
| Stories | 2 |
| Has Basement | Yes |
| Basement | Full, Unfinished |

Exterior

| | |
|-------------------|---|
| Exterior | Wood, Stone, Vinyl |
| Exterior Features | Cul-De-Sac, Playground Nearby, Schools, Shopping Nearby |
| Roof | Asphalt Shingles |
| Construction | Wood, Stone, Vinyl |
| Foundation | Concrete Perimeter |

Additional Information

Date Listed October 31st, 2024

Days on Market 158

Zoning Zone 91

DATA IS DEEMED RELIABLE BUT IS NOT GUARANTEED ACCURATE BY THE REALTORS® ASSOCIATION OF EDMONTON. COPYRIGHT 2025 BY THE REALTORS® ASSOCIATION OF EDMONTON. ALL RIGHTS RESERVED. Trademarks are owned or controlled by the Canadian Real Estate Association (CREA) and identify real estate professionals who are members of CREA (REALTOR®, REALTORS®) and/or the quality of services they provide (MLS®, Multiple Listing Service®)

Listing information last updated on April 7th, 2025 at 5:32am MDT