

\$1,479,900 - 10720-57 Ave, Edmonton

MLS® #E4400943

\$1,479,900

3 Bedroom, 2.50 Bathroom, 2,605 sqft

Single Family on 0.00 Acres

Pleasantview (Edmonton), Edmonton, AB

Located in a quiet tree-lined street in the heart of Pleasantview, minutes from the UofA, Southgate Mall and the LRT station. Next door is a park with skating rink, tennis court and basketball courts, playground and more. Step into this architect-designed, engineer-built 2-storey with double attached garage masterpiece, where meticulous craftsmanship meets unrivaled sophistication. This expansive 2,600 sq. ft. retreat boasts a spacious mudroom, gourmet kitchen, and versatile layout, promising both elegance and functionality for modern living. With a vast 37.5 ft. by 145 ft. lot and sheer luxury and elegance throughout, welcome to a realm of opulence and refinement unlike any other. Since this house is not built yet, new owners will be able to customize it to their likings such as colors, finishing, and adjustments to the floor plan.

Built in 2024

Essential Information

| | |
|----------------|-------------|
| MLS® # | E4400943 |
| Price | \$1,479,900 |
| Bedrooms | 3 |
| Bathrooms | 2.50 |
| Full Baths | 2 |
| Half Baths | 1 |
| Square Footage | 2,605 |



Acres 0.00
Year Built 2024
Type Single Family
Sub-Type Detached Single Family
Style 2 Storey
Status Active

Community Information

Address 10720-57 Ave
Area Edmonton
Subdivision Pleasantview (Edmonton)
City Edmonton
County ALBERTA
Province AB
Postal Code T6H 0Y6

Amenities

Amenities Ceiling 9 ft.
Parking Double Garage Attached

Interior

Interior Features ensuite bathroom
Appliances See Remarks
Heating Forced Air-1, Natural Gas
Stories 2
Has Basement Yes
Basement Full, See Remarks

Exterior

Exterior Wood, Stone, Stucco
Exterior Features Airport Nearby, Flat Site, Playground Nearby, Public Transportation, Schools, Shopping Nearby
Roof Asphalt Shingles
Construction Wood, Stone, Stucco
Foundation Concrete Perimeter

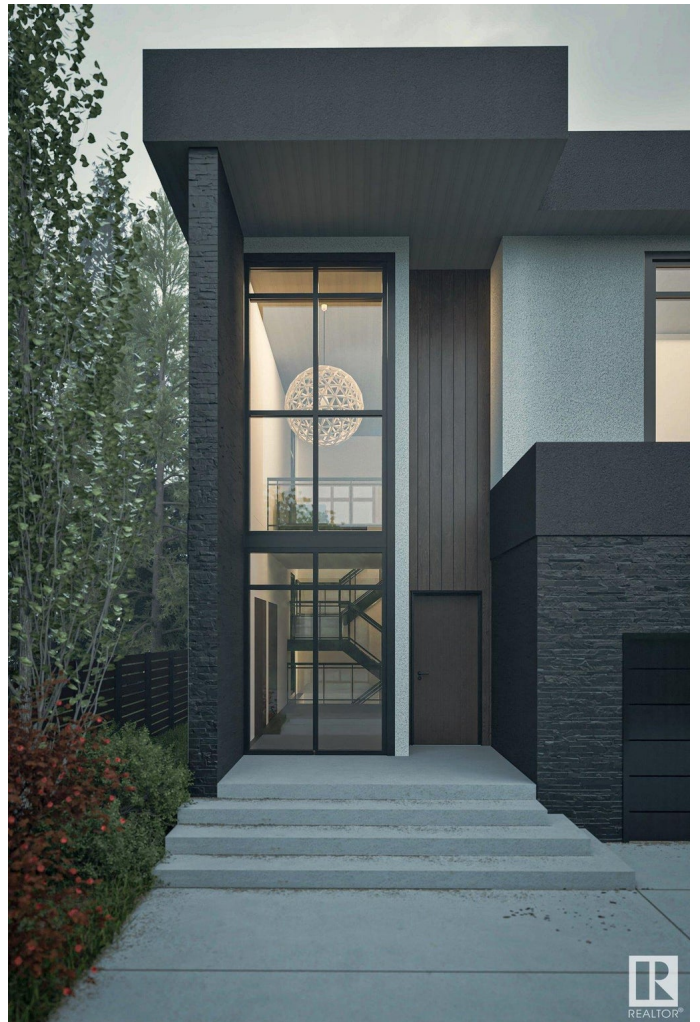
Additional Information

Date Listed August 7th, 2024
Days on Market 243



Zoning

Zone 15



DATA IS DEEMED RELIABLE BUT IS NOT GUARANTEED ACCURATE BY THE REALTORS® ASSOCIATION OF EDMONTON. COPYRIGHT 2025 BY THE REALTORS® ASSOCIATION OF EDMONTON. ALL RIGHTS RESERVED. Trademarks are owned or controlled by the Canadian Real Estate Association (CREA) and identify real estate professionals who are members of CREA (REALTOR®, REALTORS®) and/or the quality of services they provide (MLS®, Multiple Listing Service®)

Listing information last updated on April 7th, 2025 at 5:32am MDT